

## Product datasheet for **AP20169PU-N**

### **NALP2 (NLRP2) (C-term) Goat Polyclonal Antibody**

#### **Product data:**

<b>Product Type:</b>	Primary Antibodies
<b>Applications:</b>	ELISA, WB
<b>Recommended Dilution:</b>	<b>Peptide ELISA:</b> Detection Limit: 1/16000. <b>Western blot:</b> 1-2 µg/ml. In transfected HEK293 transiently expressing full-length Human NLRP2 (myc and DYKDDDDK tagged), a band of approx. 150kDa was observed. No bands were observed in mock-transfected HEK293 and the same band was observed using anti-DYKDDDDK tag antibody.
<b>Reactivity:</b>	Human
<b>Host:</b>	Goat
<b>Clonality:</b>	Polyclonal
<b>Immunogen:</b>	Peptide with sequence from the C Terminus (near) of the protein sequence according to NP_060322.1.
<b>Specificity:</b>	Recognizes NALP2 / PAN1
<b>Formulation:</b>	Tris saline, pH 7.3 containing 0.02% Sodium Azide as preservative and 0.5% BSA as stabilizer. State: Aff - Purified State: Liquid purified IgG fraction.
<b>Concentration:</b>	lot specific
<b>Purification:</b>	Ammonium Sulphate Precipitation followed by Antigen Affinity Chromatography using the immunizing peptide.
<b>Conjugation:</b>	Unconjugated
<b>Storage:</b>	Store the antibody undiluted at 2-8°C for one month or (in aliquots) at -20°C for longer. Avoid repeated freezing and thawing.
<b>Stability:</b>	Shelf life: one year from despatch.
<b>Gene Name:</b>	NLR family, pyrin domain containing 2
<b>Database Link:</b>	<a href="#">Entrez Gene 55655 Human Q9NX02</a>



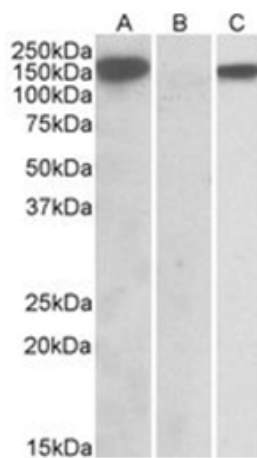
[View online »](#)

**Background:**

NALP2 belongs to a family of cytoplasmic proteins that have been implicated in cell responses to apoptotic and inflammatory stimuli. Unlike the prototypical NALP protein NALP1, NALP2 only contains a NACHT domain, leucine rich repeat (LRR), and pyrin-containing domain (PYD). This protein interacts with the adapter protein ASC in addition to CARD8 and caspase-1 to form an inflammasome with high proIL-1beta-processing activity and is thought to function as a modulator of NF-kappaB and procaspase-1 activation in macrophages. It has also been suggested that NALP2, in addition to other NALP family members, can act as innate sensors of pathogens in a manner similar to the toll-like receptors (TLRs). At least two alternatively spliced transcript variants encoding distinct isoforms have been found for NALP2.

**Synonyms:**

NLRP2, NBS1, PAN1, PYPAF2

**Product images:**

HEK293 lysate (10 ug protein in RIPA buffer) overexpressing Human NLRP2 with DYKDDDDK tag probed with (1 ug/ml) in Lane A and probed with anti-DYKDDDDK Tag (1/5000) in Lane C. Mock-transfected HEK293 probed with (1 mg/ml) in Lane B. Primary incubations were for 1 hour. Detected by chemiluminescence.