

## Product datasheet for **AP20167PU-N**

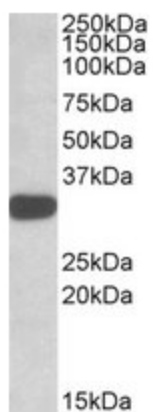
### TIPRL (C-term) Goat Polyclonal Antibody

#### Product data:

Product Type:	Primary Antibodies
Applications:	ELISA, IHC, WB
Recommended Dilution:	<b>Peptide ELISA:</b> Detection Limit: 1/16000. <b>Western blot:</b> 1-3 µg/ml. Approx 30kDa band observed in lysates of cell line K562 (calculated MW of 31.4kDa according to NP_690866.1). Primary incubation was 1 hour. <b>Immunohistochemistry on Paraffin Sections:</b> 3.75 µg/ml.
Reactivity:	Bovine, Canine, Human, Mouse, Rat
Host:	Goat
Clonality:	Polyclonal
Immunogen:	Peptide from the C Terminus of Human TIPRL according to NP_690866.1.
Specificity:	This antibody is expected to recognize isoform 1 (NP_690866.1).
Formulation:	Tris saline, pH 7.3 containing 0.02% Sodium Azide as preservative and 0.5% BSA as stabilizer. State: Aff - Purified State: Liquid purified IgG fraction.
Concentration:	lot specific
Purification:	Ammonium Sulphate Precipitation followed by Antigen Affinity Chromatography using the immunizing peptide.
Conjugation:	Unconjugated
Storage:	Store the antibody undiluted at 2-8°C for one month or (in aliquots) at -20°C for longer. Avoid repeated freezing and thawing.
Stability:	Shelf life: one year from despatch.
Gene Name:	TOR signaling pathway regulator
Database Link:	<a href="#">Entrez Gene 261726 Human</a> <a href="#">O75663</a>
Synonyms:	CG9578-like; dj69E11.3; MGC3794; TIP; TIP41
Note:	<b>Calculated MW:</b> 31.4kDa according to NP_690866.1



[View online »](#)

**Product images:**

Western blot analysis: TIPRL antibody staining of K562 lysate at 1 ug/ml (35ug protein in RIPA buffer). Primary incubation was 1 hour. Detected by chemiluminescence.