

Product datasheet for **AP20135PU-N**

Mitofusin 2 (MFN2) (C-term) Rabbit Polyclonal Antibody

Product data:

Product Type:	Primary Antibodies
Applications:	IHC, WB
Recommended Dilution:	Western Blot: 1/50-1/1000 Immunohistochemistry on Paraffin embedded Sections: 1/50-1/200.
Reactivity:	Human, Mouse, Rabbit, Rat
Host:	Rabbit
Isotype:	IgG
Clonality:	Polyclonal
Immunogen:	C-terminal sequence of Human Mitofusion-2
Specificity:	Recognizes Mitofusion 2/MFN2.
Formulation:	State: Aff - Purified State: Liquid purified IgG fraction.
Concentration:	lot specific
Purification:	Affinity Chromatography.
Conjugation:	Unconjugated
Storage:	Store the antibody undiluted (in aliquots) at -20°C for longer. Centrifugation of vial is recommended before opening. Avoid repeated freezing and thawing.
Stability:	Shelf life: one year from despatch.
Gene Name:	mitofusin 2
Database Link:	Entrez Gene 64476 Rat Entrez Gene 170731 Mouse Entrez Gene 9927 Human O95140



[View online »](#)

Background:

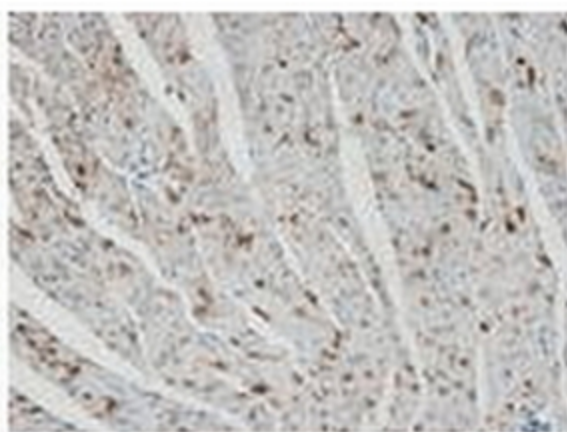
Mitofusion 2 or MFN2 is an essential transmembrane GTPase which mediates mitochondrial fusion. Fusion of mitochondria occurs in many cell types and constitutes an important step in mitochondria morphology, which is balanced between fusion and fission. MFN2 acts independently of the cytoskeleton, plays a central role in mitochondrial metabolism and may be associated with obesity and/or apoptosis processes. Overexpression induces the formation of mitochondrial networks. It plays an important role in the regulation of vascular smooth muscle cell proliferation. Defects in MFN2 lead to Charcot-Marie-Tooth disease, the most common inherited disorder of the peripheral nervous system.

Synonyms:

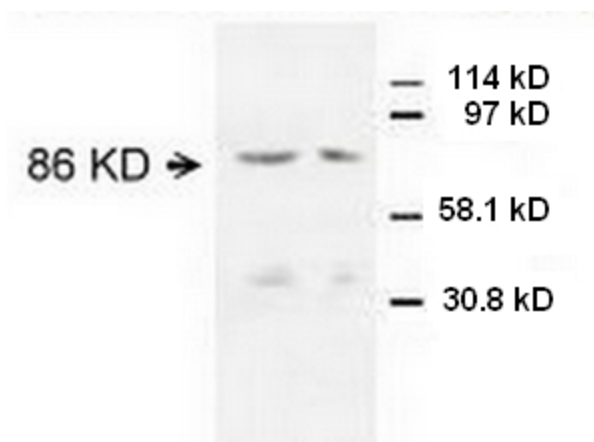
MFN2, CPRP1, KIAA0214

Protein Families:

Transmembrane

Product images:

Immunohistochemistry. AP20135PU-N MFN2 antibody staining of paraffin-embedded rat cardiac muscle tissue.



Western blot: AP20135PU-N MFN2 antibody staining Rat cardiac muscle tissue lysate.