

Product datasheet for **AP20126PU-M**

NDUFA4 Rabbit Polyclonal Antibody

Product data:

Product Type:	Primary Antibodies
Applications:	WB
Recommended Dilution:	Western blot: 1/500-1/1000.
Reactivity:	Human, Mouse, Rat
Host:	Rabbit
Clonality:	Polyclonal
Immunogen:	Synthetic peptide, corresponding to amino acids 51-100 of Human NDUFA4.
Specificity:	This antibody detects endogenous levels of NDUFA4 protein.
Formulation:	Phosphate buffered saline (PBS), pH~7.2 State: Aff - Purified State: Liquid purified Ig fraction (> 95% pure by SDS-PAGE). Preservative: 0.05% Sodium Azide
Concentration:	1.0 mg/ml
Purification:	Affinity-Chromatography using epitope-specific immunogen.
Conjugation:	Unconjugated
Storage:	Store undiluted at 2-8°C for one month or (in aliquots) at -20°C for longer. Avoid repeated freezing and thawing.
Stability:	Shelf life: one year from despatch.
Predicted Protein Size:	~ 9 kDa
Gene Name:	NDUFA4, mitochondrial complex associated
Database Link:	Entrez Gene 17992 Mouse Entrez Gene 681024 Rat Entrez Gene 4697 Human O00483
Background:	The protein encoded by this gene belongs to the complex I 9kDa subunit family. Mammalian complex I of mitochondrial respiratory chain is composed of 45 different subunits. This protein has NADH dehydrogenase activity and oxidoreductase activity. It transfers electrons from NADH to the respiratory chain. The immediate electron acceptor for the enzyme is believed to be ubiquinone
Synonyms:	CI-MLRQ; FLJ27440; MGC104422; MGC126843; MGC126845; MLRQ

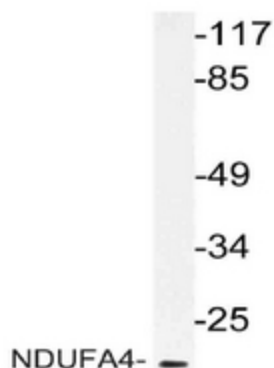


[View online »](#)

Protein Families: Transmembrane

Protein Pathways: Alzheimer's disease, Huntington's disease, Metabolic pathways, Oxidative phosphorylation, Parkinson's disease

Product images:



Western blot: analysis of NDUFA4 antibody (Cat.- No.: [AP20126PU-N]) staining in extracts from RAW264.7 cells.