

Product datasheet for **AP20107PU-N**

PRPF31 (C-term) Goat Polyclonal Antibody

Product data:

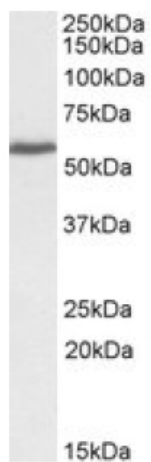
Product Type:	Primary Antibodies
Applications:	ELISA, WB
Recommended Dilution:	ELISA: Detection limit dilution: 1/16000. Western blot: 0.3-1.0 µg/ml. Approx 60kDa band observed in lysates of cell line A431 (calculated MW of 55.4kDa according to NP_056444.3).
Reactivity:	Canine, Human
Host:	Goat
Clonality:	Polyclonal
Immunogen:	Peptide with sequence from the C Terminus of the protein sequence according to NP_056444.3.
Specificity:	Recognizes RP11/PRPF31 (C-term).
Formulation:	Tris saline, pH 7.3 containing 0.02% Sodium Azide as preservative and 0.5% BSA as stabilizer. State: Aff - Purified State: Liquid purified Ig fraction.
Concentration:	lot specific
Purification:	Ammonium Sulphate Precipitation followed by Antigen Affinity Chromatography using the immunizing peptide.
Conjugation:	Unconjugated
Storage:	Store the antibody undiluted at 2-8°C for one month or (in aliquots) at -20°C for longer. Avoid repeated freezing and thawing.
Stability:	Shelf life: one year from despatch.
Gene Name:	pre-mRNA processing factor 31
Database Link:	Entrez Gene 26121 Human Q8WWY3
Background:	PRPF31 is involved in pre-mRNA splicing. It is required for U4/U6.U5 tri-snRNP formation.
Synonyms:	PRP31,Pre-mRNA-processing factor 31, NY-BR-99
Protein Families:	Druggable Genome



[View online »](#)

Protein Pathways: Spliceosome

Product images:



PRPF31 Antibody staining (0.3 ug/ml) of cell line A431 lysate (35ug protein in RIPA buffer). Primary incubation was 1 hour. Detected by chemiluminescence.