

## Product datasheet for **AP20088PU-N**

### EPHX2 (C-term) Rabbit Polyclonal Antibody

#### Product data:

Product Type:	Primary Antibodies
Applications:	ELISA, IHC
Recommended Dilution:	<b>ELISA.</b> <b>Immunohistochemistry on Paraffin Sections:</b> 5 - 10 µg/ml.
Reactivity:	Human, Monkey
Host:	Rabbit
Clonality:	Polyclonal
Immunogen:	Synthetic 17 amino acid peptide from C-Terminus of human EPHX2
Specificity:	Reacts with C-Terminus of Soluble Epoxide Hydrolase (EPHX2).
Formulation:	PBS containing 0.09% Sodium Azide as preservative State: Aff - Purified State: Liquid purified Ig fraction
Concentration:	lot specific
Purification:	Immunoaffinity Chromatography
Conjugation:	Unconjugated
Storage:	Store the antibody undiluted at 2-8°C for one month or (in aliquots) at -20°C to -70°C for longer. Avoid repeated freezing and thawing.
Stability:	Shelf life: one year from despatch.
Gene Name:	epoxide hydrolase 2
Database Link:	<a href="#">Entrez Gene 2053 Human P34913</a>



[View online »](#)

**Background:**

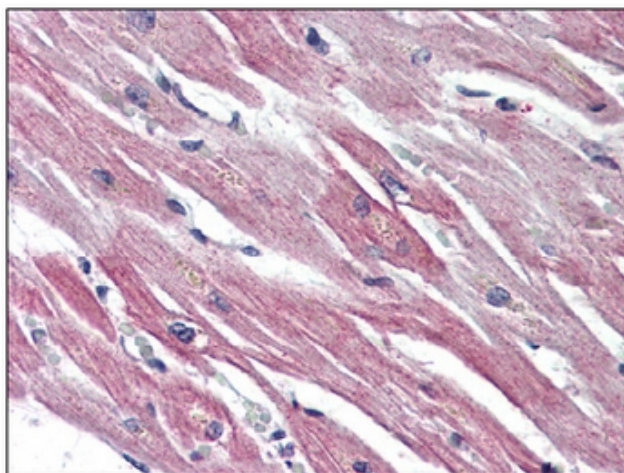
Soluble Epoxide Hydrolase (sEH) also known as cytosolic Epoxide Hydrolase is a phase I xenobiotic-metabolizing enzyme that converts epoxyeicosatrienoic acids (EETs) into their corresponding dihydroxyeicosatrienoic acids (DHETs). EETs are thought to be involved in vascular tone, ion channel regulation, mitogenesis and cell signaling. DHETs have, in general, less biological activity than EETs and are more readily excreted, thus hydration of EETs by sEH maybe a means of attenuating or eliminating their activity. sEHs have been identified in many tissues including liver, kidney, adrenal, pancreatic islets, gi tract and vascular smooth muscle.

**Synonyms:**

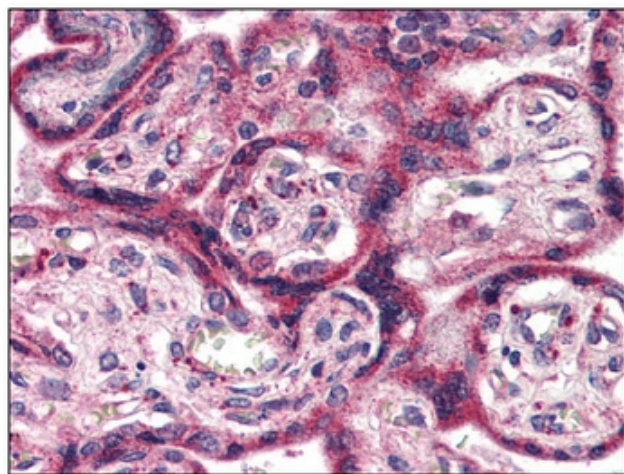
Soluble epoxide hydrolase, Epoxide hydratase, Cytosolic epoxide hydrolase, SEH, CEH

**Protein Pathways:**

Arachidonic acid metabolism, Metabolic pathways

**Product images:**

Immunohistochemistry: EPHX2 antibody staining of Formalin-Fixed, Paraffin-Embedded Human Heart.



Immunohistochemistry: EPHX2 antibody staining of Formalin-Fixed, Paraffin-Embedded Human Placenta.