

Product datasheet for **AP20076PU-N**

GPR126 (ADGRG6) (N-term) Rabbit Polyclonal Antibody

Product data:

Product Type:	Primary Antibodies
Applications:	ELISA, IHC
Recommended Dilution:	ELISA. Immunohistochemistry on Paraffin Sections: 10 µg/ml.
Reactivity:	Human, Mouse
Host:	Rabbit
Isotype:	IgG
Clonality:	Polyclonal
Immunogen:	GPR126 antibody was raised against synthetic 20 amino acid peptide from N-Terminus of human GPR126. Epitope: N-Terminus.
Specificity:	Reacts with N-Terminus of G Protein-Coupled Receptor GPR126. BLAST analysis of the peptide immunogen showed no homology with other human proteins, except GPR64 (50%).
Formulation:	PBS containing 0.09% Sodium Azide as preservative State: Aff - Purified State: Liquid purified Ig fraction
Concentration:	lot specific
Purification:	Immunoaffinity Chromatography
Conjugation:	Unconjugated
Storage:	Store undiluted at 2-8°C for one month or (in aliquots) at -20°C for longer. Avoid repeated freezing and thawing.
Stability:	Shelf life: one year from despatch.
Gene Name:	adhesion G protein-coupled receptor G6
Database Link:	Entrez Gene 57211 Human Q86SQ4



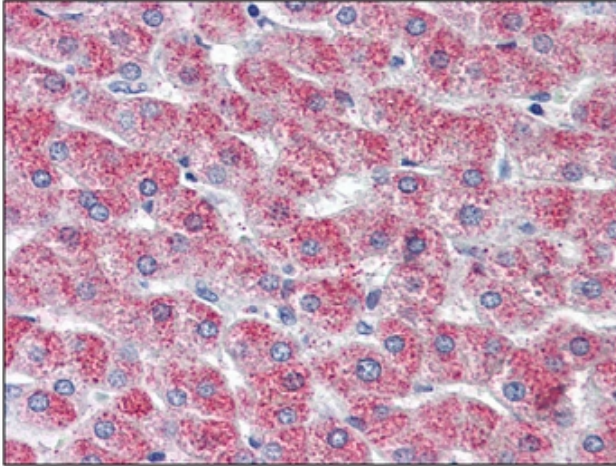
[View online »](#)

Background:

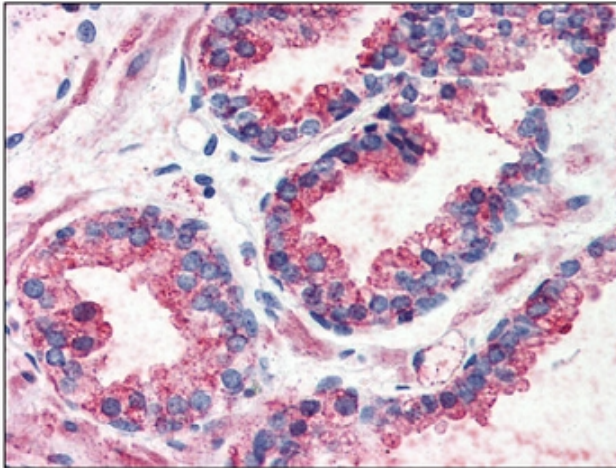
GPR126 is an Orphan-B GPCR, an Orphan member of the LNB-TM7 receptors, a sub-type family of the family B-G-protein coupled receptors with unusually long N-termini. Other members of this family have been shown to play important roles in development. GPR126 is highly expressed in the placenta as well as within the somites and nerve cells.

Synonyms:

G-protein coupled receptor 126, DREG, VIGR

Product images:

Immunohistochemistry: GPR126 antibody staining of Formalin-Fixed, Paraffin-Embedded Human Liver.



Immunohistochemistry: GPR126 antibody staining of Formalin-Fixed, Paraffin-Embedded Human Prostate.