

## Product datasheet for **AP20053PU-N**

### Lamin B2 (LMNB2) (C-term) Rabbit Polyclonal Antibody

#### Product data:

Product Type:	Primary Antibodies
Applications:	WB
Recommended Dilution:	ELISA: 1/1,000 Western blotting: 1/1,000.
Reactivity:	Human
Host:	Rabbit
Isotype:	Ig
Clonality:	Polyclonal
Immunogen:	KLH conjugated synthetic peptide between 476-504 amino acids from the C-terminal region of Human Lamin B2.
Specificity:	Recognizes Lamin B2 (C-term).
Formulation:	PBS with 0.09% (W/V) Sodium Azide as preservative. State: Purified State: Liquid purified IgG fraction.
Concentration:	lot specific
Purification:	Saturated Ammonium Sulfate (SAS) precipitation followed by dialysis against PBS.
Conjugation:	Unconjugated
Storage:	Store the antibody undiluted at 2-8°C for one month or (in aliquots) at -20°C for longer. Avoid repeated freezing and thawing.
Stability:	Shelf life: one year from despatch.
Gene Name:	lamin B2
Database Link:	<a href="#">Entrez Gene 84823 Human Q03252</a>



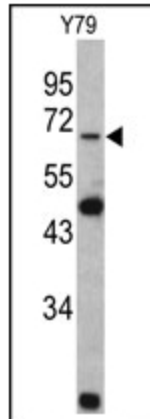
[View online »](#)

**Background:**

The nuclear lamina consists of a two-dimensional matrix of proteins located next to the inner nuclear membrane. The lamin family of proteins make up the matrix and are highly conserved in evolution. During mitosis, the lamina matrix is reversibly disassembled as the lamin proteins are phosphorylated. Lamin proteins are thought to be involved in nuclear stability, chromatin structure and gene expression. Vertebrate lamins consist of two types, A and B. Lamin B2 is one of the two B type proteins, B2.

**Synonyms:**

Lamin-B2, LMNB2, LMNB-2, LMN2, LMNB, Nuclear Envelope Marker

**Product images:**

Western blot: Lamin B2 Antibody staining of Y79 cell line lysates (35 ug/lane). Lamin B2 (arrow) was detected using the purified Pab.