

Product datasheet for **AP20046PU-N**

Glutaredoxin 2 (GLRX2) (C-term) Rabbit Polyclonal Antibody

Product data:

Product Type:	Primary Antibodies
Applications:	FC, IHC, WB
Recommended Dilution:	ELISA: 1/1,000. Western blotting: 1/50~1/100. Flow Cytometry: 1/10~1/50. Immunohistochemistry: 1/50~1/100.
Reactivity:	Human, Mouse
Host:	Rabbit
Isotype:	Ig
Clonality:	Polyclonal
Immunogen:	GLRX2 antibody is generated from Rabbits immunized with a KLH conjugated synthetic peptide between 126~155 amino acids from the C-terminal region of Human GLRX2.
Specificity:	Recognizes Glutaredoxin-2 (C-term, 126-155)
Formulation:	PBS containing 0.09% (W/V) Sodium Azide as preservative. State: Purified State: Liquid purified IgG fraction.
Concentration:	lot specific
Purification:	Saturated Ammonium Sulfate (SAS) precipitation followed by dialysis against PBS.
Conjugation:	Unconjugated
Storage:	Store the antibody undiluted at 2-8°C for one month or (in aliquots) at -20°C for longer. Avoid repeated freezing and thawing.
Stability:	Shelf life: one year from despatch.
Gene Name:	glutaredoxin 2
Database Link:	Entrez Gene 69367 Mouse Entrez Gene 51022 Human Q9NS18
Background:	GLRX2 are a family of glutathione-dependent hydrogen donors that participate in a variety of cellular redox reactions.
Synonyms:	Glutaredoxin-2 mitochondrial, GRX2, grxB



[View online »](#)

Protein Families: Transcription Factors

Product images:

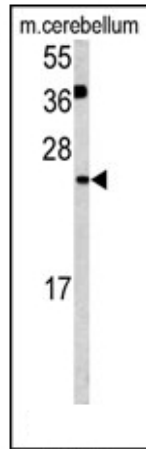


Figure 1. Glutaredoxin-2 antibody staining of Mouse Cerebellum tissue lysates (35 ug/lane). GLRX2 (arrow) was detected using the purified Pab.

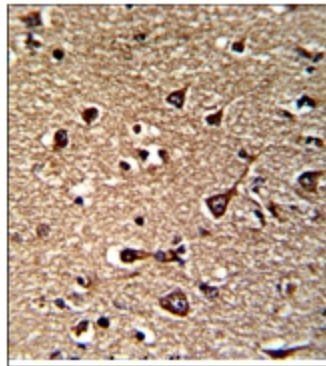


Figure 2. Glutaredoxin-2 Antibody staining of Formalin-Fixed and Paraffin-Embedded Human brain. This antibody was peroxidase-conjugated to the secondary antibody, followed by DAB staining. This data demonstrates the use of this antibody for immunohistochemistry. Clinical relevance has not been evaluated.

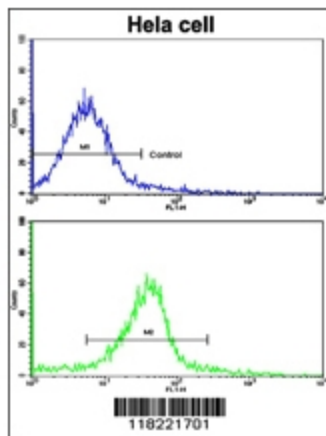


Figure 3. Glutaredoxin-2 Antibody staining of HeLa cells by Flow Cytometry (Bottom Histogram) compared to a Negative Control cell (Top Histogram). FITC-conjugated Goat-anti-Rabbit secondary antibodies were used for the analysis.