

Product datasheet for **AP20013SU-N**

NPY2R (N-term + C-term) Rabbit Polyclonal Antibody

Product data:

Product Type:	Primary Antibodies
Applications:	IF, IHC
Recommended Dilution:	Immunohistochemistry: 1/100-1/300. Immunofluorescence. To improve staining intensity, it may be necessary to employ HRP-DAB (Vector Elite ABC kit) detection or enhance Fluorescence signal using Tyramide Signal Amplification procedure.
Reactivity:	Mouse, Rat
Host:	Rabbit
Isotype:	IgG
Clonality:	Polyclonal
Immunogen:	C) GAEDENQTVKVE-NH ₂ and (C) TDFSEATNV-COOH
Specificity:	Recognizes NPY Y2 Receptor at C/N Terminus.
Formulation:	PBS containing 0.05% Sodium Azide as preservative State: Serum State: Liquid Whole Serum.
Conjugation:	Unconjugated
Storage:	Store undiluted at 2-8°C for one month or (in aliquots) at -20°C for longer. Avoid repeated freezing and thawing.
Stability:	Shelf life: one year from despatch.
Gene Name:	neuropeptide Y receptor Y2
Database Link:	Entrez Gene 18167 Mouse Entrez Gene 66024 Rat P49146
Background:	Neuropeptide Y (NPY) receptors are members of a G protein coupled receptor superfamily and they mediate a variety of physiological responses including feeding and vasoconstriction. The endogenous ligands of NPY receptors are a family of structurally related peptides, including NPY, peptide YY (PYY), and pancreatic polypeptide (PP). Increased activity of NPY and its receptors, Y1R, Y2R, and Y5R has been found in the brain in many forms of experimental obesity. Furthermore, several association studies have supported the association between NPY2R and obesity.



[View online »](#)

Synonyms: NPY2-R, NPY-Y2 receptor, Y2 receptor, Neuropeptide Y receptor 2

Protein Families: Druggable Genome, GPCR, Transmembrane

Protein Pathways: Neuroactive ligand-receptor interaction

Product images:

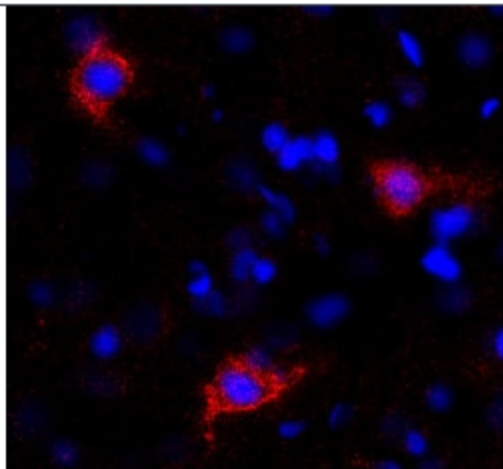


Figure 1. NPY Y2R staining of Rat cortex using Cy3-conjugated Donkey anti-Rabbit secondary antibodies (Red color) and DAPI (Blue) as a nuclear counterstain.