

Product datasheet for **AP18252PU-N**

ZYG11A (N-term) Rabbit Polyclonal Antibody

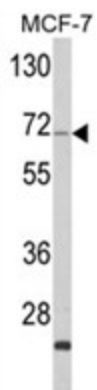
Product data:

Product Type:	Primary Antibodies
Applications:	WB
Recommended Dilution:	ELISA: 1/1,000. Western blotting: 1/100 - 1/500.
Reactivity:	Human
Host:	Rabbit
Clonality:	Polyclonal
Immunogen:	KLH conjugated synthetic peptide selected from the N-terminal region of human ZYG11A
Specificity:	This antibody reacts to ZYG11A.
Formulation:	PBS with 0.09% (W/V) sodium azide State: Liquid purified Ig
Concentration:	lot specific
Purification:	Affinity chromatography on Protein A
Conjugation:	Unconjugated
Storage:	Store the antibody undiluted at 2-8°C for one month or (in aliquots) at -20°C for longer. Avoid repeated freezing and thawing.
Stability:	Shelf life: one year from despatch.
Gene Name:	zyg-11 family member A, cell cycle regulator
Database Link:	Entrez Gene 440590 Human Q6WRX3
Background:	ZYG11A probably acts as target recruitment subunit in an E3 ubiquitin ligase complex ZYGA-CUL2-elongin BC (By similarity).
Synonyms:	Protein zyg-11 homolog A, ZYG11



[View online »](#)

Product images:



Western blot analysis of ZYG11A Antibody (N-term) in MCF-7 cell line lysates (35ug/lane). ZYG11A (arrow) was detected using the purified Pab.