

## Product datasheet for **AP18245PU-N**

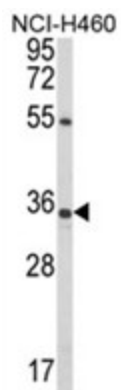
### XPA (C-term) Rabbit Polyclonal Antibody

#### Product data:

Product Type:	Primary Antibodies
Applications:	WB
Recommended Dilution:	ELISA: 1/1,000. Western blotting: 1/100 - 1/500.
Reactivity:	Human
Host:	Rabbit
Clonality:	Polyclonal
Immunogen:	conjugated synthetic peptide selected from the C-term region of human XPA
Specificity:	This antibody reacts to XPAC.
Formulation:	PBS with 0.09% (W/V) sodium azide State: Liquid purified Ig
Concentration:	lot specific
Purification:	Affinity chromatography on Protein A
Conjugation:	Unconjugated
Storage:	Store the antibody undiluted at 2-8°C for one month or (in aliquots) at -20°C for longer. Avoid repeated freezing and thawing.
Stability:	Shelf life: one year from despatch.
Gene Name:	XPA, DNA damage recognition and repair factor
Database Link:	<a href="#">Entrez Gene 7507 Human P23025</a>
Background:	XPA is involved in DNA excision repair. It initiates repair by binding to damaged sites with various affinities, depending on the photoproduct and the transcriptional state of the region. This protein is required for UV-induced CHK1 phosphorylation and the recruitment of CEP164 to cyclobutane pyrimidine dimers (CPD), sites of DNA damage after UV irradiation.
Synonyms:	XP1; XPAC
Protein Families:	Druggable Genome
Protein Pathways:	Nucleotide excision repair



[View online »](#)

**Product images:**

Western blot analysis of XPA Antibody (C-term) in NCI-H460 cell line lysates (35ug/lane). XPA (arrow) was detected using the purified Pab.