

Product datasheet for **AP18243PU-N**

WNT4 (Center) Rabbit Polyclonal Antibody

Product data:

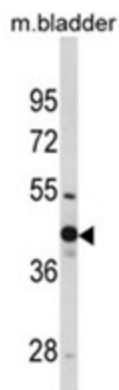
Product Type:	Primary Antibodies
Applications:	WB
Recommended Dilution:	ELISA: 1/1,000. Western blotting: 1/50 - 1/100.
Reactivity:	Human, Mouse
Host:	Rabbit
Clonality:	Polyclonal
Immunogen:	KLH conjugated synthetic peptide selected from the Center region of human WNT4
Specificity:	This antibody reacts to WNT4.
Formulation:	PBS with 0.09% (W/V) sodium azide State: Liquid purified Ig
Concentration:	lot specific
Purification:	Saturated Ammonium Sulfate (SAS) precipitation
Conjugation:	Unconjugated
Storage:	Store the antibody undiluted at 2-8°C for one month or (in aliquots) at -20°C for longer. Avoid repeated freezing and thawing.
Stability:	Shelf life: one year from despatch.
Gene Name:	Wnt family member 4
Database Link:	Entrez Gene 22417 Mouse Entrez Gene 54361 Human P56705
Background:	The WNT family consists of secreted signaling proteins. These proteins have been implicated in oncogenesis and in several developmental processes, including regulation of cell fate and patterning during embryogenesis. WNT4 is a protein which shows 98% amino acid identity to the Wnt4 protein of mouse and rat. It play a concerted role in both the control of female development and the prevention of testes formation.
Synonyms:	Protein Wnt-4, UNQ426/PRO864
Protein Families:	Druggable Genome, Secreted Protein, Transmembrane



[View online »](#)

Protein Pathways: Basal cell carcinoma, Hedgehog signaling pathway, Melanogenesis, Pathways in cancer, Wnt signaling pathway

Product images:



Western blot analysis of WNT4 Antibody (Center) in mouse bladder tissue lysates (35ug/lane). WNT4 (arrow) was detected using the purified Pab.