

Product datasheet for **AP18242PU-N**

WDSUB1 (Center) Rabbit Polyclonal Antibody

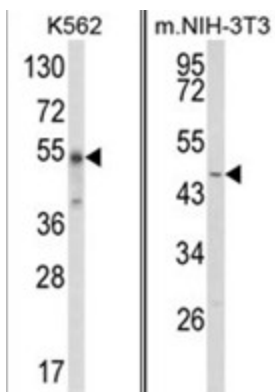
Product data:

Product Type:	Primary Antibodies
Applications:	WB
Recommended Dilution:	ELISA: 1/1,000. Western blotting: 1/100 - 1/500.
Reactivity:	Human
Host:	Rabbit
Clonality:	Polyclonal
Immunogen:	AP8816c
Specificity:	This antibody reacts to WDSUB1.
Formulation:	PBS with 0.09% (W/V) sodium azide State: Liquid purified Ig
Concentration:	lot specific
Purification:	Affinity chromatography on Protein A
Conjugation:	Unconjugated
Storage:	Store the antibody undiluted at 2-8°C for one month or (in aliquots) at -20°C for longer. Avoid repeated freezing and thawing.
Stability:	Shelf life: one year from despatch.
Gene Name:	WD repeat, sterile alpha motif and U-box domain containing 1
Database Link:	Entrez Gene 151525 Human Q8N9V3
Background:	WD repeat-containing proteins are those that contain 4 or more copies of the WD-repeat (tryptophan-aspartate repeat), a sequence motif approximately 31 amino acids long, that encodes a structural repeat. There are two isoforms of WDSUB1.
Synonyms:	WDSAM1
Protein Families:	Druggable Genome



[View online »](#)

Product images:



(LEFT) Western blot analysis of WDSUB1 Antibody (Center) in K562 cell line lysates (35ug/lane). WDSUB1 (arrow) was detected using the purified Pab. (RIGHT) Western blot analysis of WDSUB1 Antibody (Center) in NIH-3T3 cell line lysates (35ug/lane). WDSUB1 (arrow) was detected using the purified Pab.