

Product datasheet for **AP18240PU-N**

VTI1A (C-term) Rabbit Polyclonal Antibody

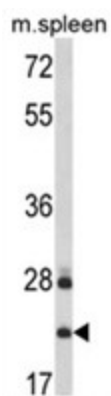
Product data:

Product Type:	Primary Antibodies
Applications:	WB
Recommended Dilution:	ELISA: 1/1,000. Western blotting: 1/100 - 1/500.
Reactivity:	Human, Mouse
Host:	Rabbit
Clonality:	Polyclonal
Immunogen:	KLH conjugated synthetic peptide selected from the C-terminal region of human VTI1A
Specificity:	This antibody reacts to VTI1A.
Formulation:	PBS with 0.09% (W/V) sodium azide State: Liquid purified Ig
Concentration:	lot specific
Purification:	Affinity chromatography on Protein A
Conjugation:	Unconjugated
Storage:	Store the antibody undiluted at 2-8°C for one month or (in aliquots) at -20°C for longer. Avoid repeated freezing and thawing.
Stability:	Shelf life: one year from despatch.
Gene Name:	vesicle transport through interaction with t-SNAREs 1A
Database Link:	Entrez Gene 53611 Mouse Entrez Gene 143187 Human Q96AJ9
Background:	V-SNARE that mediates vesicle transport pathways through interactions with t-SNAREs on the target membrane. These interactions are proposed to mediate aspects of the specificity of vesicle trafficking and to promote fusion of the lipid bilayers. It may be concerned with increased secretion of cytokines associated with cellular senescence.
Synonyms:	Vti1-rp2
Protein Families:	Transmembrane
Protein Pathways:	SNARE interactions in vesicular transport



[View online »](#)

Product images:



Western blot analysis of VTI1A Antibody (C-term) in mouse spleen tissue lysates (35ug/lane). VTI1A (arrow) was detected using the purified Pab.