

Product datasheet for **AP18231PU-N**

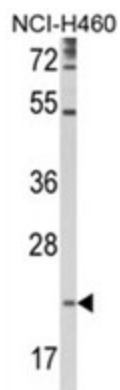
TSPAN31 (Center) Rabbit Polyclonal Antibody

Product data:

Product Type:	Primary Antibodies
Applications:	WB
Recommended Dilution:	ELISA: 1/1,000. Western blotting: 1/100 - 1/500.
Reactivity:	Human
Host:	Rabbit
Clonality:	Polyclonal
Immunogen:	KLH conjugated synthetic peptide selected from the Center region of human TSPAN31
Specificity:	This antibody reacts to Tetraspanin-31.
Formulation:	PBS with 0.09% (W/V) sodium azide State: Liquid purified Ig
Concentration:	lot specific
Purification:	Affinity chromatography on Protein A
Conjugation:	Unconjugated
Storage:	Store the antibody undiluted at 2-8°C for one month or (in aliquots) at -20°C for longer. Avoid repeated freezing and thawing.
Stability:	Shelf life: one year from despatch.
Gene Name:	tetraspanin 31
Database Link:	Entrez Gene 6302 Human Q12999
Background:	TSPAN31 is a member of the transmembrane 4 superfamily, also known as the tetraspanin family. Most of these members are cell-surface proteins that are characterized by the presence of four hydrophobic domains. The proteins mediate signal transduction events that play a role in the regulation of cell development, activation, growth and motility. This encoded protein is thought to be involved in growth-related cellular processes. It is associated with tumorigenesis and osteosarcoma.
Synonyms:	Tspan-31, Sarcoma-amplified sequence, SAS
Protein Families:	Druggable Genome, Transmembrane

[View online »](#)

Product images:



Western blot analysis of TSPAN31 Antibody (Center) in NCI-H460 cell line lysates (35ug/lane). TSPAN31 (arrow) was detected using the purified Pab. (2ug/ml)