

## Product datasheet for **AP18229PU-N**

### TSH beta (TSHB) (Center) Rabbit Polyclonal Antibody

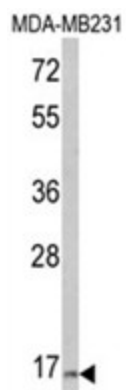
#### Product data:

Product Type:	Primary Antibodies
Applications:	WB
Recommended Dilution:	ELISA: 1/1,000. Western blotting: 1/100 - 1/500.
Reactivity:	Human
Host:	Rabbit
Clonality:	Polyclonal
Immunogen:	KLH conjugated synthetic peptide selected from the Center region of human TSHB
Specificity:	This antibody reacts to Thyrotropin beta chain.
Formulation:	PBS with 0.09% (W/V) sodium azide State: Liquid purified Ig
Concentration:	lot specific
Purification:	Affinity chromatography on Protein A
Conjugation:	Unconjugated
Storage:	Store the antibody undiluted at 2-8°C for one month or (in aliquots) at -20°C for longer. Avoid repeated freezing and thawing.
Stability:	Shelf life: one year from despatch.
Gene Name:	thyroid stimulating hormone beta
Database Link:	<a href="#">Entrez Gene 7252 Human P01222</a>
Background:	TSHB is indispensable for the control of thyroid structure and metabolism.
Synonyms:	Thyrotropin subunit beta, Thyroid-stimulating hormone subunit beta, TSH, TSHB, TSH beta



[View online »](#)

## Product images:



Western blot analysis of TSHB Antibody (Center) in MDA-MB231 cell line lysates (35ug/lane). TSHB (arrow) was detected using the purified Pab.