

## Product datasheet for **AP18226PU-N**

### CD40L (CD40LG) (C-term) Rabbit Polyclonal Antibody

#### Product data:

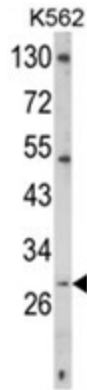
Product Type:	Primary Antibodies
Applications:	FC, WB
Recommended Dilution:	ELISA: 1/1,000. Western blotting: 1/50-1/100. Immunohistochemistry: 1/50-1/100. Flow cytometry: 1/10-1/50.
Reactivity:	Human
Host:	Rabbit
Clonality:	Polyclonal
Immunogen:	KLH conjugated synthetic peptide selected from the C-terminal region of human TRAP
Specificity:	This antibody reacts to CD154.
Formulation:	PBS with 0.09% (W/V) sodium azide State: Liquid purified Ig
Concentration:	lot specific
Purification:	Saturated Ammonium Sulfate (SAS) precipitation
Conjugation:	Unconjugated
Storage:	Store the antibody undiluted at 2-8°C for one month or (in aliquots) at -20°C for longer. Avoid repeated freezing and thawing.
Stability:	Shelf life: one year from despatch.
Gene Name:	CD40 ligand
Database Link:	<a href="#">Entrez Gene 959 Human P29965</a>
Background:	TRAP is expressed on the surface of T cells. It regulates B cell function by engaging CD40 on the B cell surface. A defect in its gene results in an inability to undergo immunoglobulin class switch and is associated with hyper-IgM syndrome.
Synonyms:	CD40 ligand, CD40-L, CD40LG, TNFSF5, TRAP, GP39
Protein Families:	Druggable Genome, Secreted Protein, Transmembrane



[View online »](#)

**Protein Pathways:**

Allograft rejection, Asthma, Autoimmune thyroid disease, Cell adhesion molecules (CAMs), Cytokine-cytokine receptor interaction, Primary immunodeficiency, Systemic lupus erythematosus, T cell receptor signaling pathway, Viral myocarditis

**Product images:**

Western blot analysis of TRified Pab.