

Product datasheet for **AP18217PU-N**

TBC1D4 (N-term) Rabbit Polyclonal Antibody

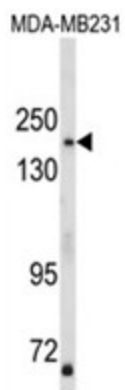
Product data:

Product Type:	Primary Antibodies
Applications:	WB
Recommended Dilution:	ELISA: 1/1,000. Western blotting: 1/100 - 1/500.
Reactivity:	Human
Host:	Rabbit
Clonality:	Polyclonal
Immunogen:	KLH conjugated synthetic peptide selected from the N-terminal region of human TBC1D4
Specificity:	This antibody reacts to TBC1D4.
Formulation:	PBS with 0.09% (W/V) sodium azide State: Liquid purified Ig
Concentration:	lot specific
Purification:	Affinity chromatography on Protein A
Conjugation:	Unconjugated
Storage:	Store the antibody undiluted at 2-8°C for one month or (in aliquots) at -20°C for longer. Avoid repeated freezing and thawing.
Stability:	Shelf life: one year from despatch.
Gene Name:	TBC1 domain family member 4
Database Link:	Entrez Gene 9882 Human O60343
Background:	TBC1D4 may act as a GTPase-activating protein for RAB2A, RAB8A, RAB10 and RAB14. Isoform 2 promotes insulin-induced glucose transporter SLC2A4/GLUT4 translocation at the plasma membrane, thus increasing glucose uptake.
Synonyms:	KIAA0603



[View online »](#)

Product images:



Western blot analysis of TBC1D4 Antibody (N-term) in MDA-MB231 cell line lysates (35ug/lane). TBC1D4 (arrow) was detected using the purified Pab.