

## Product datasheet for **AP18216PU-N**

### TAZ (N-term) Rabbit Polyclonal Antibody

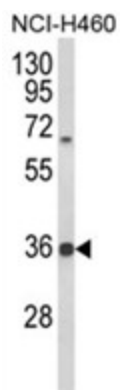
#### Product data:

Product Type:	Primary Antibodies
Applications:	WB
Recommended Dilution:	ELISA: 1/1,000. Western blotting: 1/100 - 1/500.
Reactivity:	Human
Host:	Rabbit
Clonality:	Polyclonal
Immunogen:	KLH conjugated synthetic peptide selected from the N-terminal region of human TAZ
Specificity:	This antibody reacts to Tafazzin (TAZ).
Formulation:	PBS with 0.09% (W/V) sodium azide State: Liquid purified Ig
Concentration:	lot specific
Purification:	Affinity chromatography on Protein A
Conjugation:	Unconjugated
Storage:	Store the antibody undiluted at 2-8°C for one month or (in aliquots) at -20°C for longer. Avoid repeated freezing and thawing.
Stability:	Shelf life: one year from despatch.
Gene Name:	tafazzin
Database Link:	<a href="#">Entrez Gene 6901 Human Q16635</a>
Background:	TAZ is a protein that is expressed at high levels in cardiac and skeletal muscle.
Synonyms:	EFE2, G4.5
Protein Families:	ES Cell Differentiation/IPS, Transmembrane



[View online »](#)

## Product images:



Western blot analysis of TAZ Antibody (N-term) in NCI-H460 cell line lysates (35ug/lane). TAZ (arrow) was detected using the purified Pab.