

## Product datasheet for **AP18209PU-N**

### **SREBP1 (SREBF1) (Center) Rabbit Polyclonal Antibody**

#### **Product data:**

<b>Product Type:</b>	Primary Antibodies
<b>Applications:</b>	WB
<b>Recommended Dilution:</b>	ELISA: 1/1,000. Western blotting: 1/100 - 1/500.
<b>Reactivity:</b>	Human
<b>Host:</b>	Rabbit
<b>Clonality:</b>	Polyclonal
<b>Immunogen:</b>	KLH conjugated synthetic peptide selected from the Center region of human SREBF1
<b>Specificity:</b>	This antibody reacts to SREBF1.
<b>Formulation:</b>	PBS with 0.09% (W/V) sodium azide State: Liquid purified Ig
<b>Concentration:</b>	lot specific
<b>Purification:</b>	Affinity chromatography on Protein A
<b>Conjugation:</b>	Unconjugated
<b>Storage:</b>	Store the antibody undiluted at 2-8°C for one month or (in aliquots) at -20°C for longer. Avoid repeated freezing and thawing.
<b>Stability:</b>	Shelf life: one year from despatch.
<b>Gene Name:</b>	sterol regulatory element binding transcription factor 1
<b>Database Link:</b>	<a href="#">Entrez Gene 6720 Human P36956</a>
<b>Background:</b>	SREBF1 is a transcription factor that binds to the sterol regulatory element-1 (SRE1), which is a decamer flanking the low density lipoprotein receptor gene and some genes involved in sterol biosynthesis. The protein is synthesized as a precursor that is attached to the nuclear membrane and endoplasmic reticulum. Following cleavage, the mature protein translocates to the nucleus and activates transcription by binding to the SRE1. Sterols inhibit the cleavage of the precursor, and the mature nuclear form is rapidly catabolized, thereby reducing transcription. The protein is a member of the basic helix-loop-helix-leucine zipper (bHLH-Zip) transcription factor family.



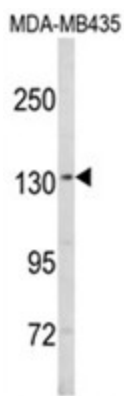
[View online »](#)

Synonyms: SREBP-1, BHLHD1

Protein Families: Druggable Genome, Transcription Factors

Protein Pathways: Insulin signaling pathway

### Product images:



Western blot analysis of SREBF1 Antibody (Center) in MDA-MB435 cell line lysates (35ug/lane). SREBF1 (arrow) was detected using the purified Pab.