

Product datasheet for **AP18206PU-N**

SORCS1 (N-term) Rabbit Polyclonal Antibody

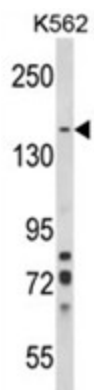
Product data:

Product Type:	Primary Antibodies
Applications:	FC, WB
Recommended Dilution:	ELISA: 1/1,000. Western blotting: 1/100 - 1/500. Flow cytometry: 1/10-1/50.
Reactivity:	Human
Host:	Rabbit
Clonality:	Polyclonal
Immunogen:	KLH conjugated synthetic peptide selected from the N-term region of human SORCS1
Specificity:	This antibody reacts to SORCS1.
Formulation:	PBS with 0.09% (W/V) sodium azide State: Liquid purified Ig
Concentration:	lot specific
Purification:	Affinity chromatography on Protein A
Conjugation:	Unconjugated
Storage:	Store the antibody undiluted at 2-8°C for one month or (in aliquots) at -20°C for longer. Avoid repeated freezing and thawing.
Stability:	Shelf life: one year from despatch.
Gene Name:	sortilin related VPS10 domain containing receptor 1
Database Link:	Entrez Gene 114815 Human Q8WY21
Background:	SORCS1 is one family member of vacuolar protein sorting 10 (VPS10) domain-containing receptor proteins. The VPS10 domain name comes from the yeast carboxypeptidase Y sorting receptor Vps10 protein.
Synonyms:	FLJ41758; FLJ43475; FLJ44957; hSorCS; SORCS
Protein Families:	Druggable Genome, Transmembrane



[View online »](#)

Product images:



Western blot analysis of SORCS1 Antibody (N-term) in K562 cell line lysates (35ug/lane). SORCS1 (arrow) was detected using the purified Pab.