

Product datasheet for **AP18204PU-N**

SOCS1 (N-term) Rabbit Polyclonal Antibody

Product data:

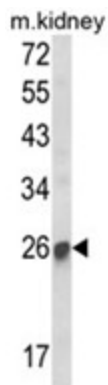
Product Type:	Primary Antibodies
Applications:	WB
Recommended Dilution:	ELISA: 1/1,000. Western blotting: 1/50 - 1/100.
Reactivity:	Human, Mouse
Host:	Rabbit
Clonality:	Polyclonal
Immunogen:	KLH conjugated synthetic peptide selected from the N-terminal region of human SOCS1
Specificity:	This antibody reacts to SOCS1.
Formulation:	PBS with 0.09% (W/V) sodium azide State: Liquid purified Ig
Concentration:	lot specific
Purification:	Saturated Ammonium Sulfate (SAS) precipitation
Conjugation:	Unconjugated
Storage:	Store the antibody undiluted at 2-8°C for one month or (in aliquots) at -20°C for longer. Avoid repeated freezing and thawing.
Stability:	Shelf life: one year from despatch.
Gene Name:	suppressor of cytokine signaling 1
Database Link:	Entrez Gene 12703 Mouse Entrez Gene 8651 Human O15524
Background:	SOCS1 is a member of the STAT-induced STAT inhibitor (SSI), also known as suppressor of cytokine signaling(SOCS), family. SSI family members are cytokine-inducible negative regulators of cytokine signaling.
Synonyms:	Suppressor of cytokine signaling 1, SOCS-1, SSI1, SSI-1, TIP3, TIP-3, JAB
Protein Families:	Druggable Genome, Stem cell - Pluripotency, Stem cell relevant signaling - JAK/STAT signaling pathway



[View online »](#)

Protein Pathways: Insulin signaling pathway, Jak-STAT signaling pathway, Type II diabetes mellitus, Ubiquitin mediated proteolysis

Product images:



Western blot analysis of SOCS1 Antibody (N-term) in mouse kidney tissue lysates (35ug/lane). SOCS1 (arrow) was detected using the purified Pab.