

## Product datasheet for **AP18203PU-N**

### SNRPB (N-term) Rabbit Polyclonal Antibody

#### Product data:

Product Type:	Primary Antibodies
Applications:	FC, WB
Recommended Dilution:	<b>ELISA:</b> 1/1,000. <b>Western blotting:</b> 1/50-1/100. <b>Flow cytometry:</b> 1/10-1/50.
Reactivity:	Human
Host:	Rabbit
Clonality:	Polyclonal
Immunogen:	KLH conjugated synthetic peptide between 42~72 amino acids from the N-terminal region of Human SNRPB
Specificity:	This antibody recognizes SNRPB (N-term).
Formulation:	PBS State: Liquid purified Ig fraction Preservative: 0.09% (W/V) Sodium Azide
Concentration:	lot specific
Purification:	Saturated Ammonium Sulfate (SAS) precipitation
Conjugation:	Unconjugated
Storage:	Store the antibody undiluted at 2-8°C for one month or (in aliquots) at -20°C for longer. Avoid repeated freezing and thawing.
Stability:	Shelf life: one year from despatch.
Gene Name:	small nuclear ribonucleoprotein polypeptides B and B1
Database Link:	<a href="#">Entrez Gene 6628 Human P14678</a>
Background:	SNRPB is one of several nuclear proteins that are found in common among U1, U2, U4/U6, and U5 small ribonucleoprotein particles (snRNPs). These snRNPs are involved in pre-mRNA splicing, and the encoded protein may also play a role in pre-mRNA splicing or snRNP structure. Autoantibodies from patients with systemic lupus erythematosus frequently recognize epitopes on the encoded protein.



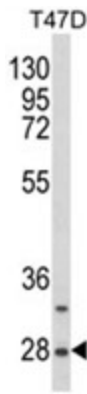
[View online »](#)

**Synonyms:** snRNP-B, SNRPB1, Sm protein B/B', SmB/B', COD

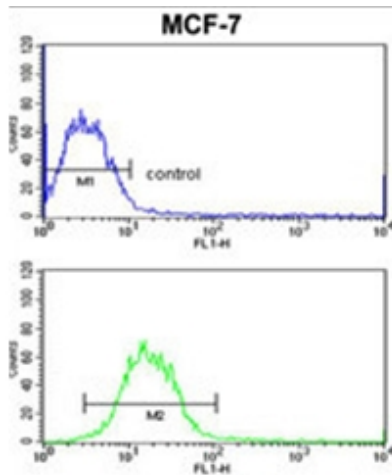
**Protein Families:** Stem cell - Pluripotency

**Protein Pathways:** Spliceosome, Systemic lupus erythematosus

**Product images:**



Western blot analysis of SNRPB Antibody (N-term R49) No in T47D cell line lysates (35ug/lane). SNRPB (arrow) was detected using the purified Pab.



Flow Cytometric analysis of MCF-7 cells using SNRPB Antibody (N-term R49) (bottom histogram) compared to a negative control cell (top histogram). FITC-conjugated goat-anti-rabbit secondary antibodies were used for the analysis.