

## Product datasheet for **AP18200PU-N**

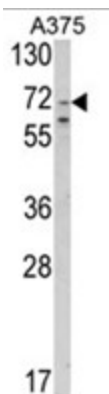
### SLC23A2 (N-term) Rabbit Polyclonal Antibody

#### Product data:

Product Type:	Primary Antibodies
Applications:	WB
Recommended Dilution:	ELISA: 1/1,000. Western blotting: 1/100 - 1/500.
Reactivity:	Human
Host:	Rabbit
Clonality:	Polyclonal
Immunogen:	KLH conjugated synthetic peptide selected from the N-terminal region of human SLC23A2
Specificity:	This antibody reacts to SLC23A2.
Formulation:	PBS with 0.09% (W/V) sodium azide State: Liquid purified Ig
Concentration:	lot specific
Purification:	Affinity chromatography on Protein A
Conjugation:	Unconjugated
Storage:	Store the antibody undiluted at 2-8°C for one month or (in aliquots) at -20°C for longer. Avoid repeated freezing and thawing.
Stability:	Shelf life: one year from despatch.
Gene Name:	solute carrier family 23 member 2
Database Link:	<a href="#">Entrez Gene 9962 Human Q9UGH3</a>
Background:	The absorption of vitamin C into the body and its distribution to organs requires two sodium-dependent vitamin C transporters. TSLC23A2 accounts for tissue-specific uptake of vitamin C.
Synonyms:	SLC23A1, NBTL1, YSPL2, KIAA0238
Protein Families:	Transmembrane



[View online »](#)

**Product images:**

Western blot analysis of SLC23A2 Antibody (N-term) in A375 cell line lysates (35ug/lane). SLC23A2 (arrow) was detected using the purified Pab.