

Product datasheet for **AP18197PU-N**

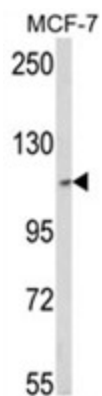
MTREX (Center) Rabbit Polyclonal Antibody

Product data:

Product Type:	Primary Antibodies
Applications:	WB
Recommended Dilution:	ELISA: 1/1,000. Western blotting: 1/100 - 1/500.
Reactivity:	Human
Host:	Rabbit
Clonality:	Polyclonal
Immunogen:	KLH conjugated synthetic peptide selected from the Center region of human SKIV2L2
Specificity:	This antibody reacts to SKIV2L2.
Formulation:	PBS with 0.09% (W/V) sodium azide State: Liquid purified Ig
Concentration:	lot specific
Purification:	Affinity chromatography on Protein A
Conjugation:	Unconjugated
Storage:	Store the antibody undiluted at 2-8°C for one month or (in aliquots) at -20°C for longer. Avoid repeated freezing and thawing.
Stability:	Shelf life: one year from despatch.
Gene Name:	Ski2 like RNA helicase 2
Database Link:	Entrez Gene 23517 Human P42285
Background:	SKIV2L2 may be involved in pre-mRNA splicing.
Synonyms:	Dob1, Mtr4, KIAA0052
Protein Pathways:	RNA degradation



[View online »](#)

Product images:

Western blot analysis of SKIV2L2 Antibody (Center) in MCF-7 cell line lysates (35ug/lane). SKIV2L2 (arrow) was detected using the purified Pab.