

Product datasheet for **AP18196PU-N**

SIGLECL1 (SIGLEC12) (C-term) Rabbit Polyclonal Antibody

Product data:

Product Type:	Primary Antibodies
Applications:	WB
Recommended Dilution:	ELISA: 1/1,000. Western blotting: 1/50 - 1/100.
Reactivity:	Human, Mouse
Host:	Rabbit
Clonality:	Polyclonal
Immunogen:	KLH conjugated synthetic peptide selected from the C-terminal region of human SIGLEC12
Specificity:	This antibody reacts to SIGLEC12.
Formulation:	PBS with 0.09% (W/V) sodium azide State: Liquid purified Ig
Concentration:	lot specific
Purification:	Saturated Ammonium Sulfate (SAS) precipitation
Conjugation:	Unconjugated
Storage:	Store the antibody undiluted at 2-8°C for one month or (in aliquots) at -20°C for longer. Avoid repeated freezing and thawing.
Stability:	Shelf life: one year from despatch.
Gene Name:	sialic acid binding Ig like lectin 12 (gene/pseudogene)
Database Link:	Entrez Gene 89858 Human Q96PQ1



[View online »](#)

Background:

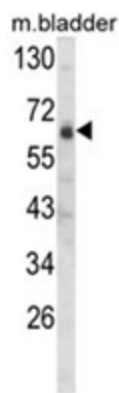
Sialic acid-binding immunoglobulin-like lectins (SIGLECs) are a family of cell surface proteins belonging to the immunoglobulin superfamily. They mediate protein-carbohydrate interactions by selectively binding to different sialic acid moieties present on glycolipids and glycoproteins. SIGLEC12 is a member of the SIGLEC3-like subfamily of SIGLECs. Members of this subfamily are characterized by an extracellular V-set immunoglobulin-like domain followed by two C2-set immunoglobulin-like domains, and the cytoplasmic tyrosine-based motifs ITIM and SLAM-like. This protein, upon tyrosine phosphorylation, has been shown to recruit the Src homology 2 domain-containing protein-tyrosine phosphatases SHP1 and SHP2. It has been suggested that the protein is involved in the negative regulation of macrophage signaling by functioning as an inhibitory receptor.

Synonyms:

Siglec-12, SIGLECL1, Siglec-L1, SLG

Protein Families:

Druggable Genome, Stem cell - Pluripotency, Transmembrane

Product images:

Western blot analysis of SIGLEC12 Antibody (C-term) in mouse bladder tissue lysates (35ug/lane). SIGLEC12 (arrow) was detected using the purified Pab.