

Product datasheet for **AP18194PU-N**

SC35 (SRSF2) (Center) Rabbit Polyclonal Antibody

Product data:

Product Type:	Primary Antibodies
Applications:	WB
Recommended Dilution:	ELISA: 1/1,000. Western blotting: 1/50 - 1/100.
Reactivity:	Human
Host:	Rabbit
Clonality:	Polyclonal
Immunogen:	KLH conjugated synthetic peptide selected from aa 83-113 from the Center region of human SFRS2
Specificity:	This antibody reacts to SFRS2.
Formulation:	PBS with 0.09% (W/V) sodium azide State: Liquid purified Ig
Concentration:	lot specific
Purification:	Saturated Ammonium Sulfate (SAS) precipitation
Conjugation:	Unconjugated
Storage:	Store the antibody undiluted at 2-8°C for one month or (in aliquots) at -20°C for longer. Avoid repeated freezing and thawing.
Stability:	Shelf life: one year from despatch.
Gene Name:	serine/arginine-rich splicing factor 2
Database Link:	Entrez Gene 6427 Human Q01130



[View online »](#)

Background:

SFRS2 is necessary for the splicing of pre-mRNA. The protein is required for formation of the earliest ATP-dependent splicing complex and interacts with spliceosomal components bound to both the 5'- and 3'-splice sites during spliceosome assembly. It also is required for ATP-dependent interactions of both U1 and U2 snRNPs with pre-mRNA. And it interacts with other spliceosomal components, via the RS domains, to form a bridge between the 5'- and 3'-splice site binding components, U1 snRNP and U2AF. It binds to purine-rich RNA sequences, either 5'-AGSAGAGTA-3' (S=C or G) or 5'-GTTCGAGTA-3' and can bind to beta-globin mRNA and commit it to the splicing pathway.

Synonyms:

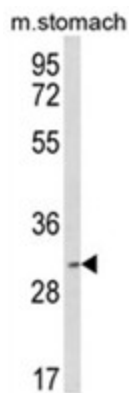
Splicing factor SC35, Splicing component 35 kDa, PR264, Nuclear Speckle Marker

Protein Families:

Stem cell - Pluripotency, Transcription Factors

Protein Pathways:

Spliceosome

Product images:

Western blot analysis of SFRS2 Antibody (Center) in mouse stomach tissue lysates (35ug/lane). SFRS2 (arrow) was detected using the purified Pab.