

Product datasheet for **AP18193PU-N**

SESN2 (Center) Rabbit Polyclonal Antibody

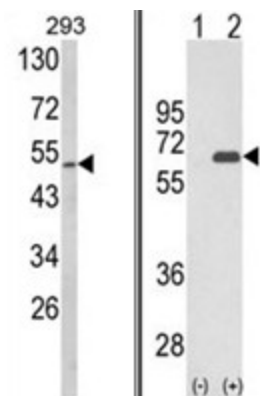
Product data:

Product Type:	Primary Antibodies
Applications:	WB
Recommended Dilution:	ELISA: 1/1,000. Western blotting: 1/50 - 1/100.
Reactivity:	Human
Host:	Rabbit
Clonality:	Polyclonal
Immunogen:	KLH conjugated synthetic peptide selected from the Center region of human Sestrin-2
Specificity:	This antibody reacts to Sestrin-2.
Formulation:	PBS with 0.09% (W/V) sodium azide State: Liquid purified Ig
Concentration:	lot specific
Purification:	Saturated Ammonium Sulfate (SAS) precipitation
Conjugation:	Unconjugated
Storage:	Store the antibody undiluted at 2-8°C for one month or (in aliquots) at -20°C for longer. Avoid repeated freezing and thawing.
Stability:	Shelf life: one year from despatch.
Gene Name:	sestrin 2
Database Link:	Entrez Gene 83667 Human P58004
Background:	SESN2 is a member of the sestrin family of PA26-related proteins. The protein may function in the regulation of cell growth and survival. This protein may be involved in cellular response to different stress conditions.
Synonyms:	SESTRIN 2, SEST2, SES2, HI95
Protein Pathways:	p53 signaling pathway



[View online »](#)

Product images:



(LEFT) Western blot analysis of Sestrin-2 Antibody (Center) in 293 cell line lysates (35ug/lane). Sestrin-2 (arrow) was detected using the purified Pab. (RIGHT) Western blot analysis of SESN2 (arrow) using rabbit polyclonal Sestrin-2 Antibody (Center). 293 cell lysates (2 ug/lane) either nontransfected (Lane 1) or transiently transfected with the SESN2 gene (Lane 2).