

Product datasheet for **AP18192PU-N**

SERPINB7 (Center) Rabbit Polyclonal Antibody

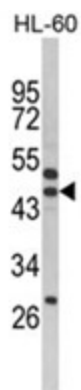
Product data:

Product Type:	Primary Antibodies
Applications:	WB
Recommended Dilution:	ELISA: 1/1,000. Western blotting: 1/100 - 1/500.
Reactivity:	Human
Host:	Rabbit
Clonality:	Polyclonal
Immunogen:	KLH conjugated synthetic peptide selected from the Center region of human SERPINB7
Specificity:	This antibody reacts to SERPINB7.
Formulation:	PBS with 0.09% (W/V) sodium azide State: Liquid purified Ig
Concentration:	lot specific
Purification:	Affinity chromatography on Protein A
Conjugation:	Unconjugated
Storage:	Store the antibody undiluted at 2-8°C for one month or (in aliquots) at -20°C for longer. Avoid repeated freezing and thawing.
Stability:	Shelf life: one year from despatch.
Gene Name:	serpin family B member 7
Database Link:	Entrez Gene 8710 Human O75635
Background:	SERPINB7 might function as an inhibitor of Lys-specific proteases and might influence the maturation of megakaryocytes via its action as a serpin.
Synonyms:	Serpin B7, Megsin
Protein Families:	Druggable Genome



[View online »](#)

Product images:



Western blot analysis of SERPINB7 Antibody (Center) in HL-60 cell line lysates (35ug/lane). SERPINB7 (arrow) was detected using the purified Pab.