

Product datasheet for **AP18182PU-N**

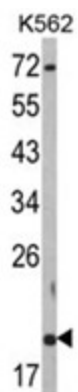
RNF5 (N-term) Rabbit Polyclonal Antibody

Product data:

Product Type:	Primary Antibodies
Applications:	WB
Recommended Dilution:	ELISA: 1/1,000. Western blotting: 1/100 - 1/500.
Reactivity:	Human
Host:	Rabbit
Clonality:	Polyclonal
Immunogen:	KLH conjugated synthetic peptide selected from the N-terminal region of human RNF5
Specificity:	This antibody reacts to RNF5.
Formulation:	PBS with 0.09% (W/V) sodium azide State: Liquid purified Ig
Concentration:	lot specific
Purification:	Affinity chromatography on Protein A
Conjugation:	Unconjugated
Storage:	Store the antibody undiluted at 2-8°C for one month or (in aliquots) at -20°C for longer. Avoid repeated freezing and thawing.
Stability:	Shelf life: one year from despatch.
Gene Name:	ring finger protein 5
Database Link:	Entrez Gene 6048 Human Q99942
Background:	RNF5 contains a RING finger, which is a motif known to be involved in protein-protein interactions. This protein is a membrane-bound ubiquitin ligase. It can regulate cell motility by targeting paxillin ubiquitination and altering the distribution and localization of paxillin in cytoplasm and cell focal adhesions.
Synonyms:	RING finger protein 5, RMA1, Ram1 homolog
Protein Families:	Transmembrane



[View online »](#)

Product images:

Western blot analysis of RNF5 Antibody (N-term) in K562 cell line lysates (35ug/lane). RNF5 (arrow) was detected using the purified Pab.