

Product datasheet for **AP18176PU-N**

Rb (RB1) (C-term) Rabbit Polyclonal Antibody

Product data:

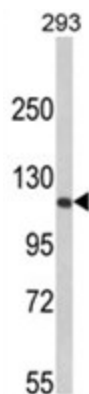
Product Type:	Primary Antibodies
Applications:	WB
Recommended Dilution:	ELISA: 1/1,000. Western blotting: 1/50 - 1/100.
Reactivity:	Human
Host:	Rabbit
Clonality:	Polyclonal
Immunogen:	KLH conjugated synthetic peptide selected from the C-terminal region of human RB1
Specificity:	This antibody reacts to RB1.
Formulation:	PBS with 0.09% (W/V) sodium az State: Liquid purified Ig
Concentration:	lot specific
Purification:	Saturated Ammonium Sulfate (SAS) precipitation
Conjugation:	Unconjugated
Storage:	Store the antibody undiluted at 2-8°C for one month or (in aliquots) at -20°C for longer. Avoid repeated freezing and thawing.
Stability:	Shelf life: one year from despatch.
Gene Name:	RB transcriptional corepressor 1
Database Link:	Entrez Gene 5925 Human P06400
Background:	RB1 is a negative regulator of the cell cycle and was the first tumor suppressor gene found. This protein also stabilizes constitutive heterochromatin to maintain the overall chromatin structure. The active, hypophosphorylated form of the protein binds transcription factor E2F1.
Synonyms:	Retinoblastoma 1, Rb, p105-Rb, pRb, pp110, OSRC
Protein Families:	Druggable Genome, Transcription Factors



[View online »](#)

Protein Pathways:

Bladder cancer, Cell cycle, Chronic myeloid leukemia, Glioma, Melanoma, Non-small cell lung cancer, Pancreatic cancer, Pathways in cancer, Prostate cancer, Small cell lung cancer

Product images:

Western blot analysis of RB1 Antibody (C-term) in 293 cell line lysates (35ug/lane). RB1 (arrow) was detected using the purified Pab. (2ug/ml)