

## Product datasheet for **AP18175PU-N**

### **RASL11B (N-term) Rabbit Polyclonal Antibody**

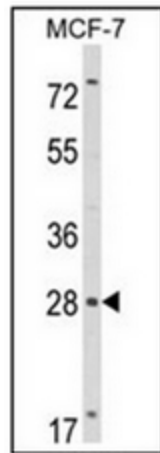
#### **Product data:**

|                       |   |
|-----------------------|---|
| Product Type:         | Primary Antibodies  |
| Applications:         | FC, WB  |
| Recommended Dilution: | <b>ELISA:</b> 1/1,000.<br><b>Western Blot:</b> 1/50-1/100.<br><b>Flow Cytometry:</b> 1/10-1/50.   |
| Reactivity:           | Human   |
| Host:                 | Rabbit  |
| Clonality:            | Polyclonal  |
| Immunogen:            | KLH conjugated synthetic peptide between 44~74 amino acids from the N-terminal region of Human RASL11B  |
| Specificity:          | This antibody recognizes RASL11B (N-term).  |
| Formulation:          | PBS with 0.09% (W/V) Sodium Azide as preservative<br>State: Liquid purified Ig fraction   |
| Concentration:        | lot specific  |
| Purification:         | Saturated Ammonium Sulfate (SAS) precipitation followed by dialysis against PBS   |
| Conjugation:          | Unconjugated  |
| Storage:              | Store undiluted at 2-8°C for one month or (in aliquots) at -20°C for longer.<br>Avoid repeated freezing and thawing.                            |
| Stability:            | Shelf life: one year from despatch.   |
| Gene Name:            | RAS like family 11 member B   |
| Database Link:        | <a href="#">Entrez Gene 65997 Human Q9BPW5</a>  |
| Background:           | RASL11B may play a role in TGF-beta1-mediated developmental processes & in pathophysiologies such as inflammation, cancer and arteriosclerosis. |
| Synonyms:             | MGC2827, MGC2827  |
| Protein Families:     | Stem cell - Pluripotency  |

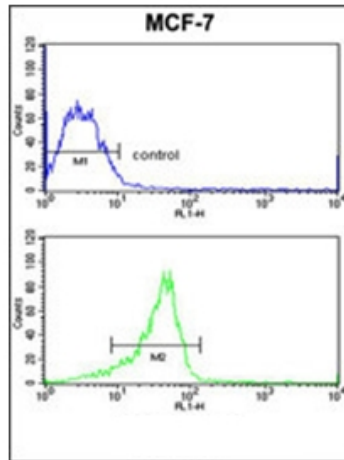


[View online »](#)

Product images:



Western blot analysis of RASL11B Antibody (N-term) in MCF-7 cell line lysates (35ug/lane). RASL11B (arrow) was detected using the purified Pab.



Flow Cytometric analysis of MCF-7 cells using RASL11B Antibody (N-term) (bottom histogram) compared to a negative control cell (top histogram). FITC-conjugated goat-anti-rabbit secondary antibodies were used for the analysis.