

## Product datasheet for **AP18165PU-N**

### PTAR1 (Center) Rabbit Polyclonal Antibody

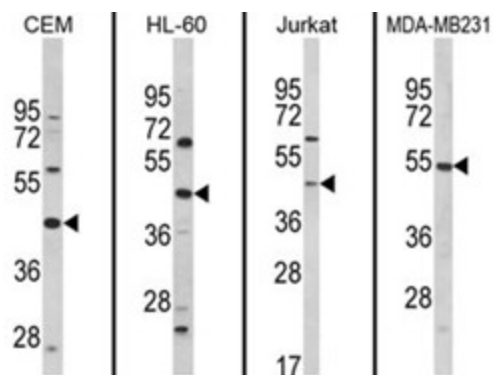
#### Product data:

Product Type:	Primary Antibodies
Applications:	WB
Recommended Dilution:	ELISA: 1/1,000. Western blotting: 1/100 - 1/500.
Reactivity:	Human
Host:	Rabbit
Clonality:	Polyclonal
Immunogen:	KLH conjugated synthetic peptide selected from the Center region of human PTAR1
Specificity:	This antibody reacts to PTAR1.
Formulation:	PBS with 0.09% (W/V) sodium azide State: Liquid purified Ig
Concentration:	lot specific
Purification:	Affinity chromatography on Protein A
Conjugation:	Unconjugated
Storage:	Store the antibody undiluted at 2-8°C for one month or (in aliquots) at -20°C for longer. Avoid repeated freezing and thawing.
Stability:	Shelf life: one year from despatch.
Gene Name:	protein prenyltransferase alpha subunit repeat containing 1
Database Link:	<a href="#">Entrez Gene 375743 Human</a> <a href="#">Q7Z6K3</a>
Synonyms:	4930428J16Rik; FLJ45604
Protein Families:	Druggable Genome



[View online »](#)

## Product images:



Western blot analysis of PTAR1 Antibody (Center) from left to right in CEM, HL-60, Jurkat, MDA-MB231 cell line lysates (35ug/lane). PTAR1 (arrow) was detected using the purified Pab.