

## Product datasheet for **AP18163PU-N**

### PSMB9 (C-term) Rabbit Polyclonal Antibody

#### Product data:

Product Type:	Primary Antibodies
Applications:	WB
Recommended Dilution:	ELISA: 1/1,000. Western blotting: 1/100 - 1/500.
Reactivity:	Human
Host:	Rabbit
Clonality:	Polyclonal
Immunogen:	KLH conjugated synthetic peptide selected from the C-terminal region of human PSMB9
Specificity:	This antibody reacts to PSMB9.
Formulation:	PBS with 0.09% (W/V) sodium azide State: Liquid purified Ig
Concentration:	lot specific
Purification:	Affinity chromatography on Protein A
Conjugation:	Unconjugated
Storage:	Store the antibody undiluted at 2-8°C for one month or (in aliquots) at -20°C for longer. Avoid repeated freezing and thawing.
Stability:	Shelf life: one year from despatch.
Gene Name:	proteasome subunit beta 9
Database Link:	<a href="#">Entrez Gene 5698 Human P28065</a>
Background:	PSMB9 is a member of the proteasome B-type family, also known as the T1B family, that is a 20S core beta subunit. The proteasome is a multicatalytic proteinase complex which is characterized by its ability to cleave peptides with Arg, Phe, Tyr, Leu, and Glu adjacent to the leaving group at neutral or slightly basic pH. The proteasome has an ATP-dependent proteolytic activity. This subunit is involved in antigen processing to generate class I binding peptides.
Synonyms:	Proteasome subunit beta type-9, Proteasome 20S LMP2, Macropain chain 7, Proteasome chain 7, Proteasome subunit beta-1i, LMP2, PSMB6i, RING12

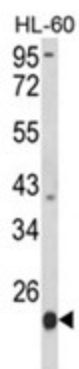


[View online »](#)

Protein Families: Druggable Genome, Protease

Protein Pathways: Proteasome

### Product images:



Western blot analysis of PSMB9 Antibody (C-term) in HL-60 cell line lysates (35ug/lane). PSMB9 (arrow) was detected using the purified Pab.