

## Product datasheet for **AP18160PU-N**

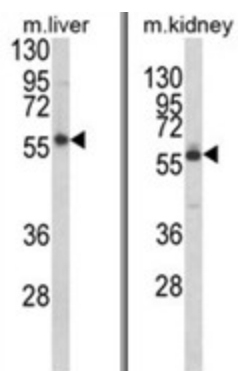
### PRODH (Center) Rabbit Polyclonal Antibody

#### Product data:

Product Type:	Primary Antibodies
Applications:	WB
Recommended Dilution:	ELISA: 1/1,000. Western blotting: 1/100 - 1/500.
Reactivity:	Human, Mouse
Host:	Rabbit
Clonality:	Polyclonal
Immunogen:	KLH conjugated synthetic peptide selected from the Center region of human PRODH
Specificity:	This antibody reacts to PRODH.
Formulation:	PBS with 0.09% (W/V) sodium azide State: Liquid purified Ig
Concentration:	lot specific
Purification:	Affinity chromatography on Protein A
Conjugation:	Unconjugated
Storage:	Store the antibody undiluted at 2-8°C for one month or (in aliquots) at -20°C for longer. Avoid repeated freezing and thawing.
Stability:	Shelf life: one year from despatch.
Gene Name:	proline dehydrogenase 1
Database Link:	<a href="#">Entrez Gene 19125 Mouse</a> <a href="#">Entrez Gene 5625 Human</a> <a href="#">O43272</a>
Background:	PRODH is a mitochondrial proline dehydrogenase that catalyzes the first step in proline degradation. It converts proline to delta-1-pyrroline-5-carboxylate.
Synonyms:	PIG6, POX2, Proline oxidase, Proline oxidase 2
Protein Families:	Druggable Genome
Protein Pathways:	Arginine and proline metabolism, Metabolic pathways



[View online »](#)

**Product images:**

(LEFT) Western blot analysis of PRODH Antibody in mouse liver tissue lysates (35ug/lane). PRODH was detected using the purified Pab. (RIGHT) Western blot analysis of PRODH Antibody (Center) in mouse kidney tissue lysates (35ug/lane). PRODH (arrow) was detected using the purified Pab.