

Product datasheet for **AP18157PU-N**

PPP2R2B (110-139) Rabbit Polyclonal Antibody

Product data:

Product Type:	Primary Antibodies
Applications:	FC, IF, IHC, WB
Recommended Dilution:	ELISA: 1/1,000. Western blotting: 1/100-1/500. Immunohistochemistry: 1/50-1/100. Immunofluorescence: 1/10-1/50. Flow Cytometry: 1/10-1/50.
Reactivity:	Human
Host:	Rabbit
Clonality:	Polyclonal
Immunogen:	KLH conjugated synthetic peptide between 110~139 amino acids from the Center region of Human PPP2R2B.
Specificity:	This antibody recognizes PPP2R2B.
Formulation:	PBS with 0.09% (W/V) Sodium Azide as preservative. State: Liquid purified Ig fraction
Concentration:	lot specific
Purification:	Protein A Chromatography followed by peptide Affinity purification.
Conjugation:	Unconjugated
Storage:	Store the antibody undiluted at 2-8°C for one month or (in aliquots) at -20°C for longer. Avoid repeated freezing and thawing.
Stability:	Shelf life: one year from despatch.
Gene Name:	protein phosphatase 2 regulatory subunit Bbeta
Database Link:	Entrez Gene 5521 Human Q00005

[View online »](#)

Background: PPP2R2B belongs to the phosphatase 2 regulatory subunit B family. Protein phosphatase 2 is one of the four major Ser/Thr phosphatases, and it is implicated in the negative control of cell growth and division. It consists of a common heteromeric core enzyme, which is composed of a catalytic subunit and a constant regulatory subunit, that associates with a variety of regulatory subunits. The B regulatory subunit might modulate substrate selectivity and catalytic activity. This protein is a beta isoform of the regulatory subunit B55 subfamily.

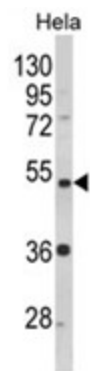
Synonyms: PP2A subunit B B-beta isoform, B55-beta isoform, PR55-beta isoform, R2-beta isoform, protein phosphatase 2A 55 kDa regulatory subunit B beta

Note: Calculated Molecular Weight: 51710 Da

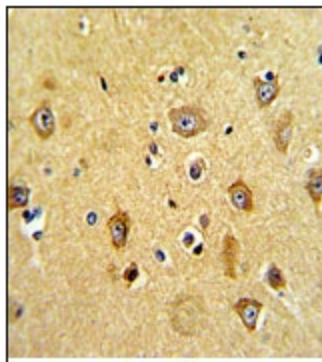
Protein Families: Druggable Genome, Phosphatase

Protein Pathways: Tight junction

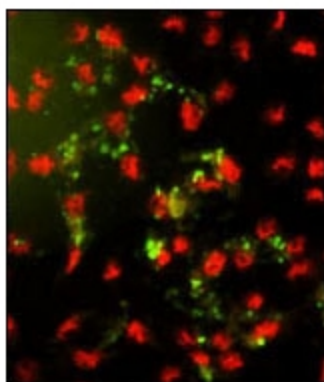
Product images:



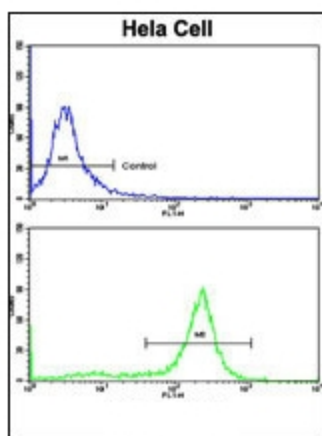
Western blot analysis of PPP2R2B Antibody (Center) in HeLa cell line lysates (35ug/lane). PPP2R2B (arrow) was detected using the purified Pab.



PPP2R2B Antibody staining of Formalin-fixed and paraffin-embedded human brain tissue using peroxidase-conjugated secondary antibody, followed by DAB staining.



Immunofluorescence analysis of PPP2R2B Antibody (Center) with HeLa cells. 0.025 mg/ml primary antibody was followed by FITC-conjugated Goat anti-Rabbit IgG (whole molecule). FITC emits green fluorescence. Red counterstaining is PI.



Flow Cytometric analysis of HeLa cells using PPP2R2B Antibody (Center) (bottom histogram) compared to a negative control cell (top histogram). FITC-conjugated Goat-anti-Rabbit secondary antibodies were used for the analysis.