

## Product datasheet for **AP18156PU-N**

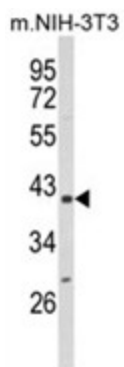
### Cyclophilin 40 (PPID) (N-term) Rabbit Polyclonal Antibody

#### Product data:

Product Type:	Primary Antibodies
Applications:	WB
Recommended Dilution:	ELISA: 1/1,000. Western blotting: 1/50 - 1/100.
Reactivity:	Human
Host:	Rabbit
Clonality:	Polyclonal
Immunogen:	KLH conjugated synthetic peptide selected from the N-terminal region of human PPID
Specificity:	This antibody reacts to PPID.
Formulation:	PBS with 0.09% (W/V) sodium azide State: Liquid purified Ig
Concentration:	lot specific
Purification:	Saturated Ammonium Sulfate (SAS) precipitation
Conjugation:	Unconjugated
Storage:	Store the antibody undiluted at 2-8°C for one month or (in aliquots) at -20°C for longer. Avoid repeated freezing and thawing.
Stability:	Shelf life: one year from despatch.
Gene Name:	peptidylprolyl isomerase D
Database Link:	<a href="#">Entrez Gene 5481 Human Q08752</a>
Background:	PPIases accelerate the folding of proteins. It catalyzes the cis-trans isomerization of proline imidic peptide bonds in oligopeptides.
Synonyms:	PPIase D, Rotamase D, Cyclophilin-related protein, PPID, CYP40, CYPD, Cyclophilin D, CYP-40
Protein Families:	Stem cell - Pluripotency
Protein Pathways:	Calcium signaling pathway, Huntington's disease, Parkinson's disease



[View online »](#)

**Product images:**

Western blot analysis of PPID Antibody (N-term) in NIH-3T3 cell line lysates (35ug/lane). PPID (arrow) was detected using the purified Pab.