

Product datasheet for **AP18154PU-N**

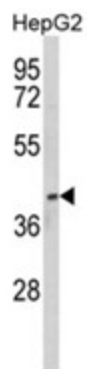
PON3 (N-term) Rabbit Polyclonal Antibody

Product data:

Product Type:	Primary Antibodies
Applications:	WB
Recommended Dilution:	ELISA: 1/1,000. Western blotting: 1/100 - 1/500.
Reactivity:	Human
Host:	Rabbit
Clonality:	Polyclonal
Immunogen:	KLH conjugated synthetic peptide selected from the N-terminal region of human PON3
Specificity:	This antibody reacts to PON3.
Formulation:	PBS with 0.09% (W/V) sodium azide State: Liquid purified Ig
Concentration:	lot specific
Purification:	Affinity chromatography on Protein A
Conjugation:	Unconjugated
Storage:	Store the antibody undiluted at 2-8°C for one month or (in aliquots) at -20°C for longer. Avoid repeated freezing and thawing.
Stability:	Shelf life: one year from despatch.
Gene Name:	paraoxonase 3
Database Link:	Entrez Gene 5446 Human Q15166
Background:	PON3 is secreted into the bloodstream and associates with high-density lipoprotein (HDL). The protein also rapidly hydrolyzes lactones and can inhibit the oxidation of low-density lipoprotein (LDL), a function that is believed to slow the initiation and progression of atherosclerosis.
Synonyms:	PON 3, PON-3
Protein Families:	Secreted Protein, Transmembrane
Protein Pathways:	Metabolic pathways



[View online »](#)

Product images:

Western blot analysis of PON3 Antibody (N-term) in HepG2 cell line lysates (35ug/lane). PON3 (arrow) was detected using the purified Pab.