

## Product datasheet for **AP18153PU-N**

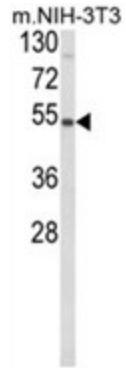
### PISD (Center) Rabbit Polyclonal Antibody

#### Product data:

Product Type:	Primary Antibodies
Applications:	WB
Recommended Dilution:	ELISA: 1/1,000. Western blotting: 1/100 - 1/500.
Reactivity:	Human, Mouse
Host:	Rabbit
Clonality:	Polyclonal
Immunogen:	conjugated synthetic peptide selected from the Center region of human PISD
Specificity:	This antibody reacts to PISD.
Formulation:	PBS with 0.09% (W/V) sodium azide State: Liquid purified Ig
Concentration:	lot specific
Purification:	Affinity chromatography on Protein A
Conjugation:	Unconjugated
Storage:	Store the antibody undiluted at 2-8°C for one month or (in aliquots) at -20°C for longer. Avoid repeated freezing and thawing.
Stability:	Shelf life: one year from despatch.
Gene Name:	phosphatidylserine decarboxylase
Database Link:	<a href="#">Entrez Gene 23761 Human Q9UG56</a>
Background:	Phosphatidylserine decarboxylases catalyze the formation of phosphatidylethanolamine (PE) by decarboxylation of phosphatidylserine (PS). Type I PSDs, such as PISD, are targeted to the inner mitochondrial membrane by an N-terminal targeting sequence. PISD also contains a conserved LGST motif that functions as an autocatalytic cleavage site where the proenzyme is split into mature alpha and beta subunits.
Synonyms:	DJ858B16; dj858B16.2; DKFZp566G2246; OTTHUMP00000063301; PSD; PSDC; PSSC



[View online »](#)

**Product images:**

Western blot analysis of PISD Antibody (Center) in NIH-3T3 cell line lysates (35ug/lane). PISD (arrow) was detected using the purified Pab.