

Product datasheet for **AP18149PU-N**

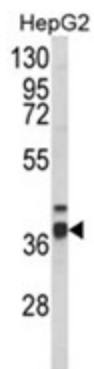
PECI (EC12) (C-term) Rabbit Polyclonal Antibody

Product data:

Product Type:	Primary Antibodies
Applications:	WB
Recommended Dilution:	ELISA: 1/1,000. Western blotting: 1/100 - 1/500.
Reactivity:	Human
Host:	Rabbit
Clonality:	Polyclonal
Immunogen:	KLH conjugated synthetic peptide selected from the C-terminal region of human Peci
Specificity:	This antibody reacts to Peci.
Formulation:	PBS with 0.09% (W/V) sodium azide State: Liquid purified Ig
Concentration:	lot specific
Purification:	Affinity chromatography on Protein A
Conjugation:	Unconjugated
Storage:	Store the antibody undiluted at 2-8°C for one month or (in aliquots) at -20°C for longer. Avoid repeated freezing and thawing.
Stability:	Shelf life: one year from despatch.
Gene Name:	enoyl-CoA delta isomerase 2
Database Link:	Entrez Gene 10455 Human O75521
Background:	PECI is an auxiliary enzyme that catalyzes an isomerization step required for the beta-oxidation of unsaturated fatty acids.
Synonyms:	DRS1, DRS-1, HCA88, NY-REN-1, NYREN1
Protein Pathways:	Fatty acid metabolism



[View online »](#)

Product images:

Western blot analysis of PECI Antibody (C-term) in HepG2 cell line lysates (35ug/lane). PECI (arrow) was detected using the purified Pab.