

## Product datasheet for **AP18148PU-N**

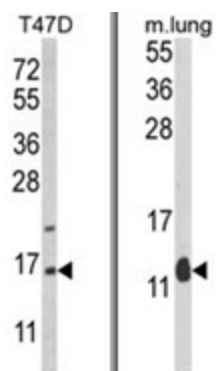
### PEA15 (C-term) Rabbit Polyclonal Antibody

#### Product data:

|                       |  |
|-----------------------|--|
| Product Type:         | Primary Antibodies   |
| Applications:         | WB   |
| Recommended Dilution: | ELISA: 1/1,000.<br>Western blotting: 1/100 - 1/500.  |
| Reactivity:           | Human, Mouse   |
| Host:                 | Rabbit   |
| Clonality:            | Polyclonal   |
| Immunogen:            | KLH conjugated synthetic peptide selected from the C-terminal region of human PEA-15   |
| Specificity:          | This antibody reacts to PEA15.   |
| Formulation:          | PBS with 0.09% (W/V) sodium azide<br>State: Liquid purified Ig   |
| Concentration:        | lot specific   |
| Purification:         | Affinity chromatography on Protein A   |
| Conjugation:          | Unconjugated   |
| Storage:              | Store the antibody undiluted at 2-8°C for one month or (in aliquots) at -20°C for longer.<br>Avoid repeated freezing and thawing.            |
| Stability:            | Shelf life: one year from despatch.  |
| Gene Name:            | phosphoprotein enriched in astrocytes 15   |
| Database Link:        | <a href="#">Entrez Gene 8682 Human Q15121</a>  |
| Background:           | PEA15 is a death effector domain (DED)-containing protein predominantly expressed in the central nervous system, particularly in astrocytes. |
| Synonyms:             | Astrocytic phosphoprotein PEA-15, PED  |
| Protein Families:     | Druggable Genome   |



[View online »](#)

**Product images:**

(LEFT) Western blot analysis of PEA-15 Antibody (C-term) in T47D cell line lysates (35ug/lane).PEA-15 (arrow) was detected using the purified Pab.  
(RIGHT) Western blot analysis of PEA-15 Antibody (C-term) in mouse lung tissue lysates (35ug/lane).PEA-15 (arrow) was detected using the purified Pab.