

Product datasheet for **AP18146PU-N**

PARD3 (C-term) Rabbit Polyclonal Antibody

Product data:

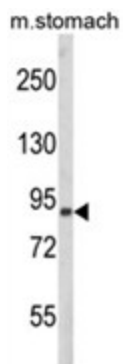
Product Type:	Primary Antibodies
Applications:	WB
Recommended Dilution:	ELISA: 1/1,000. Western blotting: 1/100 - 1/500.
Reactivity:	Human, Mouse
Host:	Rabbit
Clonality:	Polyclonal
Immunogen:	KLH conjugated synthetic peptide selected from the C-terminal region of human PARD3
Specificity:	This antibody reacts to PARD3.
Formulation:	PBS with 0.09% (W/V) sodium azide State: Liquid purified Ig
Concentration:	lot specific
Purification:	Affinity chromatography on Protein A
Conjugation:	Unconjugated
Storage:	Store the antibody undiluted at 2-8°C for one month or (in aliquots) at -20°C for longer. Avoid repeated freezing and thawing.
Stability:	Shelf life: one year from despatch.
Gene Name:	par-3 family cell polarity regulator
Database Link:	Entrez Gene 93742 Mouse Entrez Gene 56288 Human Q8TEW0
Background:	PARD proteins, which were first identified in <i>C. elegans</i> , are essential for asymmetric cell division and polarized growth, whereas CDC42 (MIM 116952) mediates the establishment of cell polarity. The CDC42 GTPase, which is controlled by nucleotide exchange factors (GEFs; see MIM 606057) and GTPase-activating proteins (GAPs; see MIM 604980), interacts with a large set of effector proteins that typically contain a CDC42/RAC (MIM 602048)-interactive binding (CRIB) domain.
Synonyms:	PARD-3, PAR-3, PAR3A, PAR3-alpha, ASIP



[View online »](#)

Protein Pathways: Adherens junction, Chemokine signaling pathway, Endocytosis, Neuroactive ligand-receptor interaction, Tight junction

Product images:



Western blot analysis of PAR3 Antibody (C-term) in mouse stomach tissue lysates (35ug/lane). PAR3 (arrow) was detected using the purified Pab.