

Product datasheet for **AP18142PU-N**

PXR (NR112) (Center) Rabbit Polyclonal Antibody

Product data:

Product Type:	Primary Antibodies
Applications:	FC, IF, IHC, WB
Recommended Dilution:	ELISA: 1/1,000. Western blotting: 1/1000. Immunohistochemistry: 1/50 - 1/100. Flow Cytometry: 1/10 - 1/50 Immunofluorescence: 1/10 - 1/50
Reactivity:	Human
Host:	Rabbit
Clonality:	Polyclonal
Immunogen:	KLH conjugated synthetic peptide between 100-127 aa selected from the Center region of human NR112
Specificity:	This antibody reacts to NR112.
Formulation:	PBS with 0.09% (W/V) sodium azide State: Liquid purified Ig
Concentration:	lot specific
Purification:	Affinity chromatography on Protein A
Conjugation:	Unconjugated
Storage:	Store the antibody undiluted at 2-8°C for one month or (in aliquots) at -20°C for longer. Avoid repeated freezing and thawing.
Stability:	Shelf life: one year from despatch.
Predicted Protein Size:	49762 Da.
Gene Name:	nuclear receptor subfamily 1 group I member 2
Database Link:	Entrez Gene 8856 Human O75469



[View online »](#)

Background:

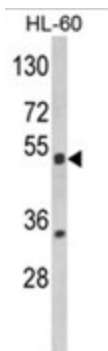
NR1I2 belongs to the nuclear receptor superfamily, members of which are transcription factors characterized by a ligand-binding domain and a DNA-binding domain. This protein is a transcriptional regulator of the cytochrome P450 gene CYP3A4, binding to the response element of the CYP3A4 promoter as a heterodimer with the 9-cis retinoic acid receptor RXR. It is activated by a range of compounds that induce CYP3A4, including dexamethasone and rifampicin.

Synonyms:

PXR

Protein Families:

Druggable Genome, Nuclear Hormone Receptor, Transcription Factors

Product images:

Western blot analysis of NR1I2 Antibody (Center) in HL-60 cell line lysates (35ug/lane). NR1I2 (arrow) was detected using the purified Pab.