

Product datasheet for **AP18139PU-N**

ANP (NPPA) (N-term) Rabbit Polyclonal Antibody

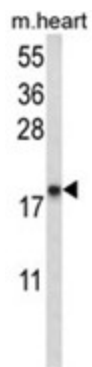
Product data:

Product Type:	Primary Antibodies
Applications:	WB
Recommended Dilution:	ELISA: 1/1,000. Western blotting: 1/100 - 1/500.
Reactivity:	Human, Mouse
Host:	Rabbit
Clonality:	Polyclonal
Immunogen:	KLH conjugated synthetic peptide selected from the N-terminal region of human NPPA
Specificity:	This antibody reacts to Atrial Natriuretic Factor (ANF).
Formulation:	PBS with 0.09% (W/V) sodium azide State: Liquid purified Ig
Concentration:	lot specific
Purification:	Affinity chromatography on Protein A
Conjugation:	Unconjugated
Storage:	Store the antibody undiluted at 2-8°C for one month or (in aliquots) at -20°C for longer. Avoid repeated freezing and thawing.
Stability:	Shelf life: one year from despatch.
Gene Name:	natriuretic peptide A
Database Link:	Entrez Gene 230899 Mouse Entrez Gene 4878 Human P01160
Background:	NPPA belongs to the natriuretic peptide family. Natriuretic peptides are implicated in the control of extracellular fluid volume and electrolyte homeostasis. This protein is synthesized as a large precursor(containing a signal peptide), which is processed to release a peptide from the N-terminus with similarity to vasoactive peptide, cardiodilatin, and another peptide from the C-terminus with natriuretic-diuretic activity.
Synonyms:	Atrial Natriuretic Peptide, Prepronatriodilatin, NPPA, ANP, PND
Protein Families:	Secreted Protein, Transmembrane



[View online »](#)

Product images:



Western blot analysis of NPPA Antibody (N-term) in mouse heart tissue lysates (35ug/lane). NPPA (arrow) was detected using the purified Pab.