

Product datasheet for **AP18136PU-N**

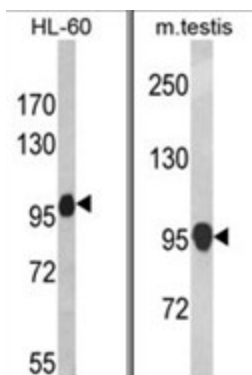
NALP12 (NLRP12) Rabbit Polyclonal Antibody

Product data:

Product Type:	Primary Antibodies
Applications:	WB
Recommended Dilution:	ELISA: 1/1,000. Western blotting: 1/100 - 1/500.
Reactivity:	Human, Mouse
Host:	Rabbit
Clonality:	Polyclonal
Immunogen:	KLH conjugated synthetic peptide selected from the C-terminal region of human NLRP12
Specificity:	This antibody reacts to NALP2.
Formulation:	PBS with 0.09% (W/V) sodium azide State: Liquid purified Ig
Concentration:	lot specific
Purification:	Affinity chromatography on Protein A
Conjugation:	Unconjugated
Storage:	Store the antibody undiluted at 2-8°C for one month or (in aliquots) at -20°C for longer. Avoid repeated freezing and thawing.
Stability:	Shelf life: one year from despatch.
Gene Name:	NLR family, pyrin domain containing 12
Database Link:	Entrez Gene 378425 Mouse Entrez Gene 91662 Human P59046
Background:	NALPs are cytoplasmic proteins that form a subfamily within the larger CATERPILLER protein family. Most short NALPs, such as NALP12, have an N-terminal pyrin (MEFV; MIM 608107) domain (PYD), followed by a NACHT domain, a NACHT-associated domain (NAD), and a C-terminal leucine-rich repeat (LRR) region. The long NALP, NALP1 (MIM 606636), also has a C-terminal extension containing a function to find domain (FIIND) and a caspase recruitment domain (CARD). NALPs are implicated in the activation of proinflammatory caspases (e.g., CASP1; MIM 147678) via their involvement in multiprotein complexes called inflammasomes.
Synonyms:	NLRP12, PYPAF7, RNO



[View online »](#)

Product images:

(LEFT) Western blot analysis of NLRP12 Antibody in HL-60 cell line lysates (35ug/lane). NLRP12 (arrow) was detected using the purified Pab.
(RIGHT) Western blot analysis of NLRP12 Antibody in mouse testis tissue lysates (35ug/lane). NLRP12 (arrow) was detected using the purified Pab.