

## Product datasheet for **AP18134PU-N**

### **NIP7 (C-term) Rabbit Polyclonal Antibody**

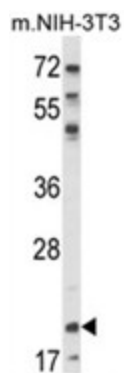
#### **Product data:**

<b>Product Type:</b>	Primary Antibodies
<b>Applications:</b>	WB
<b>Recommended Dilution:</b>	ELISA: 1/1,000. Western blotting: 1/100 - 1/500.
<b>Reactivity:</b>	Human
<b>Host:</b>	Rabbit
<b>Clonality:</b>	Polyclonal
<b>Immunogen:</b>	KLH conjugated synthetic peptide selected from the C-terminal region of human NIP7
<b>Specificity:</b>	This antibody reacts to NIP7.
<b>Formulation:</b>	PBS with 0.09% (W/V) sodium azide State: Liquid purified Ig
<b>Concentration:</b>	lot specific
<b>Purification:</b>	Affinity chromatography on Protein A
<b>Conjugation:</b>	Unconjugated
<b>Storage:</b>	Store the antibody undiluted at 2-8°C for one month or (in aliquots) at -20°C for longer. Avoid repeated freezing and thawing.
<b>Stability:</b>	Shelf life: one year from despatch.
<b>Gene Name:</b>	NIP7, nucleolar pre-rRNA processing protein
<b>Database Link:</b>	<a href="#">Entrez Gene 51388 Human Q9Y221</a>
<b>Background:</b>	Required for proper 27S pre-rRNA processing and 60S ribosome subunit assembly.
<b>Synonyms:</b>	CGI-37, HSPC031, HSPC180, OK/SW-cl.76, OK/SW-cl.78



[View online »](#)

## Product images:



Western blot analysis of NIP7 Antibody (C-term) in NIH-3T3 cell line lysates (35ug/lane). NIP7 (arrow) was detected using the purified Pab.