

Product datasheet for **AP18125PU-N**

Nck (NCK1) (N-term) Rabbit Polyclonal Antibody

Product data:

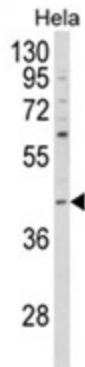
Product Type:	Primary Antibodies
Applications:	WB
Recommended Dilution:	ELISA: 1/1,000. Western blotting: 1/100 - 1/500.
Reactivity:	Human
Host:	Rabbit
Clonality:	Polyclonal
Immunogen:	KLH conjugated synthetic peptide selected from the N-terminal region of human NCK1
Specificity:	This antibody reacts to NCK1.
Formulation:	PBS with 0.09% (W/V) sodium azide State: Liquid purified Ig
Concentration:	lot specific
Purification:	Affinity chromatography on Protein A
Conjugation:	Unconjugated
Storage:	Store the antibody undiluted at 2-8°C for one month or (in aliquots) at -20°C for longer. Avoid repeated freezing and thawing.
Stability:	Shelf life: one year from despatch.
Gene Name:	NCK adaptor protein 1
Database Link:	Entrez Gene 4690 Human P16333
Background:	NCK1 is one of the signaling and transforming proteins containing Src homology 2 and 3 (SH2 and SH3) domains. It is located in the cytoplasm and is an adaptor protein involved in transducing signals from receptor tyrosine kinases to downstream signal recipients such as RAS.
Synonyms:	Cytoplasmic protein NCK1, NCK, NCK adaptor protein 1
Protein Families:	Druggable Genome



[View online »](#)

Protein Pathways: Axon guidance, ErbB signaling pathway, Pathogenic Escherichia coli infection, T cell receptor signaling pathway

Product images:



Western blot analysis of NCK1 Antibody (N-term) in HeLa cell line lysates (35ug/lane). NCK1 (arrow) was detected using the purified Pab.