

Product datasheet for **AP18123PU-N**

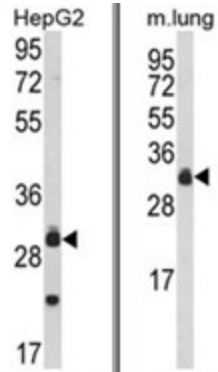
MYD88 Rabbit Polyclonal Antibody

Product data:

Product Type:	Primary Antibodies
Applications:	WB
Recommended Dilution:	ELISA: 1/1,000. Western blotting: 1/100 - 1/500.
Reactivity:	Human, Mouse
Host:	Rabbit
Clonality:	Polyclonal
Immunogen:	KLH conjugated synthetic peptide selected from the Center region of human MyD88
Specificity:	This antibody reacts to MYD88.
Formulation:	PBS with 0.09% (W/V) sodium azide State: Liquid purified Ig
Concentration:	lot specific
Purification:	Affinity chromatography on Protein A
Conjugation:	Unconjugated
Storage:	Store the antibody undiluted at 2-8°C for one month or (in aliquots) at -20°C for longer. Avoid repeated freezing and thawing.
Stability:	Shelf life: one year from despatch.
Gene Name:	myeloid differentiation primary response 88
Database Link:	Entrez Gene 17874 Mouse Entrez Gene 4615 Human Q99836
Background:	Adapter protein involved in the Toll-like receptor and IL-1 receptor signaling pathway in the innate immune response. It acts via IRAK1, IRAK2 and TRAF6, leading to NF-kappa-B activation, cytokine secretion and the inflammatory response and increases IL-8 transcription. It may be involved in myeloid differentiation.
Synonyms:	Myeloid differentiation primary response protein MyD88
Protein Families:	Druggable Genome
Protein Pathways:	Apoptosis, Toll-like receptor signaling pathway



[View online »](#)

Product images:

(LEFT) Western blot analysis of MyD88 Antibody (Center) in HepG2 cell line lysates (35ug/lane). MyD88 (arrow) was detected using the purified Pab. (RIGHT) Western blot analysis of MyD88 Antibody (Center) in mouse lung tissue lysates (35ug/lane). MyD88 (arrow) was detected using the purified Pab. (2ug/ml)