

## Product datasheet for **AP18120PU-N**

### Myelin Protein Zero (MPZ) (C-term) Rabbit Polyclonal Antibody

#### Product data:

Product Type:	Primary Antibodies
Applications:	FC, IHC, WB
Recommended Dilution:	ELISA: 1/1,000. Western blotting: 1/100-1/500. Flow Cytometry: 1/10-1/50. Immunohistochemistry: 1/50-1/100.
Reactivity:	Human
Host:	Rabbit
Clonality:	Polyclonal
Immunogen:	KLH conjugated synthetic peptide between 193~223 amino acids selected from the C-terminal region of Human MPZ
Specificity:	This antibody recognizes MPZ.
Formulation:	PBS with 0.09% (W/V) Sodium Azide State: Purified State: Liquid purified Ig fraction
Concentration:	lot specific
Purification:	Affinity chromatography on Protein A
Conjugation:	Unconjugated
Storage:	Store the antibody undiluted at 2-8°C for one month or (in aliquots) at -20°C for longer. Avoid repeated freezing and thawing.
Stability:	Shelf life: one year from despatch.
Gene Name:	myelin protein zero
Database Link:	<a href="#">Entrez Gene 4359 Human P25189</a>
Background:	MPZ is a major structural protein of peripheral myelin. Creation of an extracellular membrane face which guides the wrapping process and ultimately compacts adjacent lamellae.
Synonyms:	Myelin P0 protein, Myelin protein zero, Myelin peripheral protein, MPP

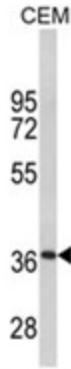


[View online »](#)

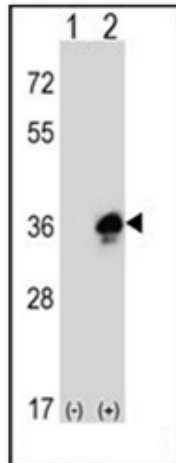
**Protein Families:** Druggable Genome, Transmembrane

**Protein Pathways:** Cell adhesion molecules (CAMs)

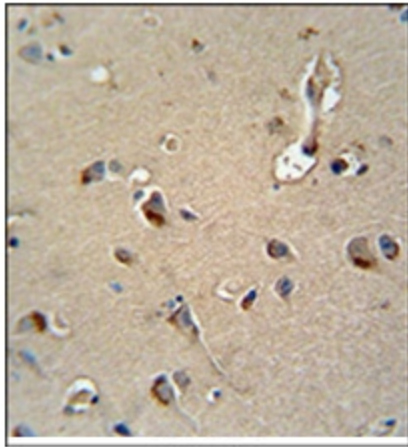
**Product images:**



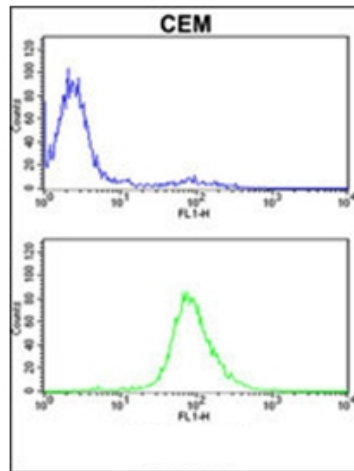
Western blot analysis of MPZ Antibody (C-term) in CEM cell line lysates (35ug/lane). MPZ (arrow) was detected using the purified Pab.



Western blot analysis of MPZ Antibody (C-term). 293 cell lysates (2 ug/lane) either nontransfected (Lane 1) or transiently transfected (Lane 2) with the MPZ gene.



MPZ Antibody (C-term) Immunohistochemistry analysis in formalin fixed and Paraffin Embedded Human brain tissue followed by peroxidase conjugation of the secondary antibody and DAB staining. This data demonstrates the use of the MPZ Antibody (C-term) for immunohistochemistry. Clinical relevance has not been evaluated.



MPZ Antibody (C-term) flow cytometric analysis of CEM cells (bottom histogram) compared to a negative control cell (top histogram). FITC-conjugated goat-anti-rabbit secondary antibodies were used for the analysis.